



**RAJARAJESWARI MEDICAL COLLEGE
& HOSPITAL**
#202, Kambipura, Mysore Road
Bangalore: 560074

Accredited by NAAC with "A" Grade

**Annual Quality Assurance Report
(AQAR) of Internal Quality Assurance
Cell (IQAC) of the Institution for the year
2014-15**

Submitted to



राष्ट्रीय मूल्यांकन एवं प्रत्यायन परिषद्

विश्वविद्यालय अनुदान आयोग का स्वायत्त संस्थान

NATIONAL ASSESSMENT AND ACCREDITATION COUNCIL
An Autonomous Institution of the University Grants Commission
P. O. Box. No. 1075, Opp: NLSIU, Nagarbhavi, Bangalore - 560 072 India



CONTENTS

Sl. No.	Contents	Page Nos.
PART A		
	Details of the Institution	3
	IQAC Composition and Activities	8
PART B		
	Criterion – I: Curricular Aspects	12
	Criterion – II: Teaching, Learning and Evaluation	15
	Criterion – III: Research, Consultancy and Extension	20
	Criterion – IV: Infrastructure and Learning Resources	28
	Criterion – V: Student Support and Progression	32
	Criterion – VI: Governance, Leadership & Management	37
	Criterion – VII: Innovations and Best Practices	44
Annexures		
	Academic Calendar	49
	Analysis of Feedback	51
	Best Practices 1	58
	Best Practices 2	59
	Equipment List	60
	Extension Activities	62



Part – A

Details of the Institution





RAJARAJESWARI MEDICAL COLLEGE & HOSPITAL

BANGALORE

Accredited by NAAC with "A" Grade

THE ANNUAL QUALITY ASSURANCE REPORT (AQAR) OF THE IQAC

Part – A

1. Details of the Institution

1.1 Name of the Institution

Rajarajeswari Medical College

1.2 Address Line 1

#202, Kambipura, Mysore Road,

Address Line 2

BENGALURU

City/Town

BENGALURU

State

KARNATAKA

Pin Code

560074

Institution e-mail address

rajarajeswarimedicalcollege@yahoo.
com

Contact Nos.

080-28437444





Name of the Head of the Institution:

Tel. No. with STD Code:

Mobile:

Name of the IQAC Co-ordinator:

Mobile:

IQAC e-mail address:

Name of the IQAC Joint Co-ordinator:

Mobile:

1.3 NAAC Track ID (For ex. MHCOCN 1887)

1.4 NAAC Executive Committee No. & Date:

(For Example EC/32/A&A/143 dated 3-5-2004.
This EC no. is available in the right corner- bottom





of your institution's Accreditation Certificate)

1.5 Website address:

www.rrmch.org

Web-link of the AQAR:

www.rrmch.org/quality-initiatives/naac/aqar

For ex. <http://www.ladykeanecollege.edu.in/AQAR2012-13.doc>

1.6 Accreditation Details

Sl. No.	Cycle	Grade	CGPA	Year of Accreditation	Validity Period
1	1 st Cycle	A	3.05	2014	5 YEARS
2	2 nd Cycle	-	-	-	-
3	3 rd Cycle	-	-	-	-
4	4 th Cycle	-	-	-	-

1.7 Date of Establishment of IQAC : DD/MM/YYYY

07-01-2013

1.8 AQAR for the year (*for example 2010-11*)

2014-15

1.9 Details of the previous year's AQAR submitted to NAAC after the latest Assessment and Accreditation by NAAC (*for example AQAR 2010-11 submitted to NAAC on 12-10-2011*)

i. AQAR _____ 2014-15 submitted to NAAC _____ (23/01/2018)

1.13 Special status conferred by Central/ State Government-- UGC/CSIR/DST/DBT/ICMR etc

Autonomy by State/Central Govt. / University

University with Potential for Excellence UGC-CPE

DST Star Scheme UGC-CE

UGC-Special Assistance Programme DST

UGC-Innovative PG programmes Any other (*Specify*)

UGC-COP Programmes

2. IQAC Composition and Activities

2.1 No. of Teachers

2.2 No. of Administrative/Technical staff

2.3 No. of students

2.4 No. of Management representatives

2.5 No. of Alumni

2.6 No. of any other stakeholder and community representatives

2.7 No. of Employers/ Industrialists

2.8 No. of other External Experts

2.9 Total No. of members

2.10 No. of IQAC meetings held

2.11 No. of meetings with various stakeholders: No. by

Non-Teaching Staff Students Alumni Others

2.12 Has IQAC received any funding from UGC during the year? Yes No

If yes, mention the amount

2.13 Seminars and Conferences (only quality related)

Total Nos. International National State Institution Level

(i) No. of Seminars/Conferences/ Workshops/Symposia organized by the IQAC

(ii) Themes

- Slow , advanced learner and mentorship implementation for product quality improvement
- Value added courses to meet curriculum deficiency

2.14 Significant Activities and contributions made by IQAC

- Implementation of value adding courses, gender equity, environment human values
- Curricular gap filling by student centric methods, problem based and participative learning
- Implementation of the academic calendar
- Student’s performance review systematically improved
- Increased extension and ISR activities
- Regularity of varied meetings of IQAC and internalisation
- Stringent faculty recruitment processes to consider PhD, Geographic and category.

2.15 Plan of Action by IQAC/Outcome

The plan of action chalked out by the IQAC in the beginning of the year towards quality enhancement and the outcome achieved by the end of the year *

Plan of Action	Achievements
<ul style="list-style-type: none"> • To enhance student centric methods in teaching learning process • To enhance gender equity , environment, citizenship role • To initiate Teacher and student performance monitoring mechanism • To implement rigorously decentralisation , participative discussion in governance • Effective and efficient feed back 	<p>Value added courses, problem based learning, group discussion ,effective use of internet in learning initiated</p> <p>Activities initiated to meet the objectives</p> <p>Feedback systems, CPA cards initiated</p> <p>IQAC ,established and implemented</p>

system ,outcome from this is used for system improvement	Feedback recommendations are implemented
--	--

** Attach the Academic Calendar of the year as Annexure.*

2.15 Whether the AQAR was placed in statutory body Yes No

Management - - icate by - y

Provide the details of the action taken

The AQAR placed by IQAC before the governing council, was approved by the said body



Criterion I

Part – B

CURRICULUR ASPECTS



Part – B

Criterion – I

I. Curricular Aspects

1.1 Details about Academic Programmes

Level of the Programme	Number of existing Programmes	Number of programmes added during the year	Number of self-financing programmes	Number of value added / Career Oriented programmes
PhD	01	-	-	-
PG	20	-	-	ENRICHMENT -80
UG	03	-	-	PBL - 145
Diploma	06	-	-	-
Advanced Diploma	-	-	-	-
Certificate	-	02	-	-
Others(Super speciality)	04	-	-	-
Total	34	02	-	225

Interdisciplinary	-	-	-	-
Innovative	-	-	-	-

1.2 (i) Flexibility of the Curriculum: CBCS/Core/Elective option / Open options

(ii) Pattern of programmes:

Pattern	Number of programmes
Semester	-
Trimester	-
Annual	34

1.3 Feedback from stakeholders*

Alumni YES Parents YES Employers YES

Students YES

(On all aspects)

Mode of feedback : Online - Manual YES Co-operating schools (for PEI) -

**Please provide an analysis of the feedback in the Annexure*

1.4 Whether there is any revision/update of regulation or syllabi, if yes, mention their salient aspects.

NIL

1.5 Any new Department/Centre introduced during the year. If yes, give details.

Superspeciality Departments

1. M.Ch Cardiology
2. M.Ch Plastic Surgery
3. M.Ch Pediatric Surgery
4. M.Ch Urology



Criterion II

Part – B

TEACHING- LEARNING AND EVALUATION



Criterion – II

2. Teaching, Learning and Evaluation

2.1 Total No. of permanent faculty

Total	Asst. Professors	Associate Professors	Professors	Others
474	62	41	75	296

2.2 No. of permanent faculty with Ph.D. 6

2.3 No. of Faculty Positions Recruited (R) and Vacant (V) during the year

Asst. Professors		Associate Professors		Professors		Others		Total	
R	V	R	V	R	V	R	V	R	V
62	-	41	-	75	-	296	-	474	-

2.4 No. of Guest and Visiting faculty and Temporary faculty NIL

2.5 Faculty participation in conferences and symposia:

No. of Faculty	International level	National level	State level
Attended Seminars/ Workshops	0	30	52
Presented papers	1	16	25
Resource Persons	0	6	26

2.6 Innovative processes adopted by the institution in Teaching and Learning:

Visits to the library and access of internet helps to know about the latest trends in technology and many novel applications. Blending these novel applications with the theoretical concept always helps to bring students close to the concept. The Institution library is well stocked with books, journals, and back volumes, projects including e-books and e-journals, text books, reference books.

For the Purpose of teaching latest innovative methods of teaching using OHP , Power Point presentations, YouTube,Internet ,Models/charts and other ICT facilities.

The different methods also incorporate bed side teaching clinic, experimental teaching and group discussion and case studies.

The learning as student centric approach involving self directed learning, assisted learning, learning by seeing, learning by doing himself.

2.7 Total No. of actual teaching days during this academic year 250 days

2.8 Examination/ Evaluation Reforms initiated by the Institution (for example: Open Book Examination, Bar Coding, Double Valuation, Photocopy, Online Multiple Choice Questions)

3 Internal Assessments tests are conducted periodically in each year. The average of 2 best internals are taken into consideration & average marks sent to the university. Internal Assessment scripts after evaluation are given to the students and if they have any grievances regarding evaluation it will be corrected. A minimum of 35% percentage eligibility is mandatory for appearing in university examinations Introduced MCQ tests. There is a bar - coding at RGUHS for theory examination. Each script is valued by two different examiners and if the difference of marks is 15% or more, a third valuation is done by another examiner. The Failed candidate is entitled to get a Xerox copy of his/her answer script and if any difference is found it will be corrected. All the issues including grievances regarding the internal assessment scores will be looked into if it appears to be valid, the necessary actions will be taken.

2.9 No. of faculty members involved in curriculum restructuring/revision/syllabus development as member of Board of Study/Faculty/Curriculum Development 6

2.10 Average percentage of attendance of students 80%

2.11 Course/Programme wise distribution of pass percentage :

Title of the Programme	Total no. of students appeared	Division				
		Distinction %	I %	II %	III %	Pass %
MBBS	753	2.12	20.7	14.87	19.65	57.37%

The total number of students appeared is calculated as the Sum total average number of each year (average of 1 st MBBS + 2 nd MBBS + Final MBBS Phase I & Final MBBS Phase 2 = Total number appeared)

2.12 How does IQAC Contribute/Monitor/Evaluate the Teaching & Learning processes :

Under IQAC varied activities for key aspects are implemented by committee and monitored by Associate Deans for academic, human resource, examination and others. The IQAC contribute for identifying the value adding courses and remedial through problem based learning and enrichment courses. IQAC collects significant feedback analyzes, initiates, corrective actions. Teacher quality, teaching learning process are evaluated by IQAC. Facilities for slow and advanced learners and remedial drill are initiated and evaluated. Faculty development program, infrastructure and ICT facilities for teaching learning including advanced library facilities are provided.

2.13 Initiatives undertaken towards faculty development

<i>Faculty / Staff Development Programmes</i>	<i>Number of faculty benefitted</i>
Refresher courses	-
UGC – Faculty Improvement Programme	-
HRD programmes	25
Orientation programmes	212
Faculty exchange programme	-
Staff training conducted by the university	7
Staff training conducted by other institutions	6
Summer / Winter schools, Workshops, etc.	-
<u>Others</u>	
MET Workshop for faculty	90
PG research methodology workshop	64

2.14 Details of Administrative and Technical staff

Category	Number of Permanent Employees	Number of Vacant Positions	Number of permanent positions filled during the Year	Number of positions filled temporarily
Administrative Staff	168		40	
Technical Staff	140		26	



Criterion III

Part – B

RESEARCH, CONSULTANCY AND EXTENSION



Criterion – III

3. Research, Consultancy and Extension

3.1 Initiatives of the IQAC in Sensitizing/Promoting Research Climate in the institution

The college has constituted committee for research under Internal Quality Assurance cell (IQAC) .This committee monitors research promotion, resources mobilization, facilities and publications aspects.

As a policy this committee conducts research methodology sessions, orientation on how to make patent, guest lectures on intellectual property right and such similar activities.

Orientation on how to avoid plagiarism research article writing arranged

Guest lecture on h-index, impact factor, citation index, SCOPUS, range and average on publications arranged

3.2 Details regarding major projects

	Completed	Ongoing	Sanctioned	Submitted
Number	-	6	1	-
Outlay in Rs. Lakhs	-	-	-	-

3.3 Details regarding minor projects

	Completed	Ongoing	Sanctioned	Submitted
Number	-	-	-	-
Outlay in Rs. Lakhs	-	-	-	-

3.4 Details on research publications

	International	National	Others
Peer Review Journals	51	46	-
Non-Peer Review Journals	-	-	-
e-Journals	2	1	-
Conference proceedings	-	9	6

3.5 Details on Impact factor of publications:

Range Average h-index Nos. in SCOPUS

3.6 Research funds sanctioned and received from various funding agencies, industry and other organisations

Nature of the Project	Duration Year	Name of the funding Agency	Total grant sanctioned	Received
Major projects	6	-	-	-
Minor Projects	2 Months	2ICMR	20000	-
Interdisciplinary Projects	-	-	-	-
Industry sponsored	-	-	-	-
Projects sponsored by the University/ College	-	-	-	-
Students research projects <i>(other than compulsory by the University)</i>	2 Months	2 ICMR	20000	-
Any other(Specify)	-	-	-	-
Total	-	-	40000	-

3.7 No. of books published i) With ISBN No. Chapters in Edited Books

ii) Without ISBN No.

3.8 No. of University Departments receiving funds from

UGC-SAP CAS DST-FIST
 DPE DBT Scheme/funds

3.9 For colleges

Autonomy CPE DBT Star Scheme
 INSPIRE CE Any Other (specify)



VGST

3.10 Revenue generated through consultancy

Level	International	National	State	University	College
3.11 No. of conferences	-	-	-	-	-
organized by the Institution	-	-	-	-	-
Sponsoring agencies	-	-	-	-	-

3.12 No. of faculty served as experts, chairpersons or resource persons

3.13 No. of collaborations International National Any other

Melbourne University

3.14 No. of linkages created during this year - 02

3.15 Total budget for research for current year in lakhs :

From Funding agency From Management of University/College

Total

3.16 No. of patents received this year

Type of Patent		Number
National	Applied	-
	Granted	-
International	Applied	-
	Granted	-
Commercialised	Applied	-
	Granted	-

3.17 No. of research awards/ recognitions received by faculty and research fellows
 Of the institute in the year

Total	International	National	State	University	Dist	College
11	-	11	-	-	-	-

3.18 No. of faculty from the Institution who are Ph. D. Guides and students registered under them

01
-

3.19 No. of Ph.D. awarded by faculty from the Institution

-

3.20 No. of Research scholars receiving the Fellowships (Newly enrolled + existing ones)

JRF - SRF 01 Project Fellows - Any other -

3.21 No. of students Participated in NSS events:

University level - State level -
 National level - International level -

3.22 No. of students participated in NCC events:

University level - State level -
 National level - International level -

3.23 No. of Awards won in NSS:

University level - State level -
 National level - International level -

3.24 No. of Awards won in NCC:

University level	-	State level	-
National level	-	International level	-

3.25 No. of Extension activities organized

University forum	-	College forum	82
NCC	-	NSS	-
		Any other	-

3.26 Major Activities during the year in the sphere of extension activities and Institutional Social Responsibility – refer annexure 5 page No. 65.

Apr to Jun - 2014

Sl No	Date	Activities	Venue
1	01.04.14	Anganawadi Health Checkup	Thathaguni
2	05.04.14	Health Camp	Banjarapalya
3	07.04.14	Immunization	KG Doddi Bande
4	12.04.14	Eye Camp	Agara
5	22.04.14	Immunization	MG Palya Bande
6	29.04.14	Anganawadi Health Checkup	BB Nagara
7	03.05.14	Health Checkup	Medanahalli
8	07.05.14	ANC Checkup	Banandur
9	09.05.14	Immunization	Heggadagere Colony
10	15.05.14	Immunization	Ittamadu
11	17.05.14	Health Camp	Banandur
12	18.05.14	Anganawadi Health Checkup	Wajarahalli
13	19.05.14	Immunization	KG Doddi Bande
14	26.05.14	Health Camp	Ittamadu
15	28.05.14	Health Camp	Wonderla
16	04.06.14	Eye Camp	Gollahalli
17	09.06.14	School Health Checkup	Thathaguni
18	11.06.14	ANC Checkup	Ittamadu
19	12.06.14	Health Camp	Mekedatu
20	22.06.14	School Health Checkup	Angarahalli
21	30.06.14	School Health Checkup	Bhakthipura



Jul to Sep - 2014

Sl No	Date	Activities	Venue
1	01.07.14	Health Camp	Manchanayakanahalli
2	02.07.14	ANC Checkup	Ittamadu, Banandur, Heggadagere
3	08.07.14	Health Camp	Rajarajeswari Nagara
4	12.07.14	School Health Checkup	Thathaguni
5	15.07.14	School Health Checkup	Hanumanthanagara
6	18.07.14	Health Camp	MG Palya Bande
7	21.07.14	Health Camp	Heggadagere
8	24.07.14	Aw & School Health Checkup	Anepalya, Doddipalya
9	28.07.14	Immunization	Lakshmipura, Vrushabhavathipura
10	06.08.14	Health Camp	Ittamadu
11	09.08.14	Skin & Dental Camp	Wonderla
12	11.08.14	School Health Checkup	Lakshmipura
13	25.08.14	Health Camp	Kamanapalya
14	28.08.14	Health Camp	Bhakthipura
15	01.09.14	Aw & School Health Checkup	Chowdeswari Nagara
16	02.09.14	Immunization	KG Doddi
17	11.09.14	Immunization	Uragahalli Bande
18	17.09.14	ANC Checkup	Ittamadu
19	19.09.14	BGS School Health Checkup	Chathra
20	26.09.14	Health Camp	Hakkipikki Colony

Oct to Dec - 2014

Sl No	Date	Activities	Venue
1	07.10.14	Dental Camp	Wonderla
2	13.10.14	Immunization	Ittamadu
3	18.10.14	Health Camp	KR Halli
4	25.10.14	Health Camp	Agara
5	31.10.14	Eye Camp	Manchanayakanahalli
6	05.11.14	School & Anganawadi Health Checkup	Anepalya
7	06.11.14	Eye Camp	Navagrama
8	11.11.14	School Health Checkup	Abbankuppe
9	18.11.14	BGS School Health Checkup	Banandur
10	22.11.14	Anganawadi Health Checkup	Gollahalli
11	26.11.14	Anganawadi Health Checkup	Channasandra
12	01.12.14	Health Camp	Doddamaranahalli
13	04.12.14	Health Camp	K R Halli
14	12.12.14	Immunization	Hosadoddi
15	17.12.14	Skin Camp	Vrushabhavathipura
16	24.12.14	School Health Checkup	Angarahalli
17	29.12.14	Health Camp	BEML Layout
18	31.12.14	Health Camp	Hakkipikki Colony





Jan to Mar - 2015

Sl No	Date	Activities	Venue
1	01.01.15	PNC Checkup	Ittamadu, Banandur, Heggadagere
2	03.01.15	Eye Camp	Wajarahalli
3	08.01.15	School Health Checkup	Heggadagere Colony
4	12.01.15	Immunization	K G Doddi Bande
5	18.01.15	Pulse Polio	19 Villages
6	19.01.15	Pulse Polio	19 Villages
7	20.01.15	Pulse Polio	19 Villages
8	23.01.15	Health Camp	Sugganahalli
9	27.01.15	Health Camp	Lakshmisagara
10	31.01.15	Eye Camp	Wonderla
11	03.02.15	Immunization	KG Doddi
12	04.02.15	ANC Checkup	Ittamadu, Banandur, Heggadagere
13	05.02.15	Dental & Eye Camp	Channasandra
14	14.02.15	Anganawadi Health Checkup	Devagere
15	22.02.15	Pulse Polio	19 Villages
16	23.02.15	Pulse Polio	19 Villages
17	24.02.15	Pulse Polio	19 Villages
18	27.02.15	Health Camp	KR Halli
19	02.03.15	Health Camp	Shivanapalya
20	13.03.15	Immunization	Chathra
21	16.03.15	Health Camp	Hakkipikki Colony
22	26.03.15	PNC Checkup	Ittamadu, Banandur, Heggadagere
23	31.03.15	Immunization	Uragahalli





Criterion IV

Part – B

INFRASTRUCTURE AND LEARNING RESOURCES



Criterion – IV

4. Infrastructure and Learning Resources

4.1 Details of increase in infrastructure facilities:

Facilities	Existing	Newly created	Source of Fund	Total
Campus area	25 acres	Nil	Nil	-
Class rooms	6	Nil	Nil	-
Laboratories	10	Nil	Nil	-
Seminar Halls	56	-	-	-
No. of important equipments purchased (\geq 1-0 lakh) during the current year.	Enclosed in Annexure 4			
Value of the equipment purchased during the year (Rs. in Lakhs)				
Others				

4.2 Computerization of administration and library

Central library automated by using NGL 2.0.0 version (NewGenLib) for the library technical operations and it is integrated with RFID Technology KIOSK- Self Issue, Return, Renewal & document search, Gate Antenna

4.3 Library services:

	Existing		Newly added		Total	
	No.	Value	No.	Value	No.	Value
Text Books	878	16,17,668.92	762	26,93,421.12	1640	43,11,090.04
Reference Books	250	4,26,800.00	107	2,28,820.00	357	6,55,620.00
Print Journals	143	44,75,621.73	160	56,59,783.00		10,13,5404.73
e-Books		8,05,000.00		12,61,000.00		20,66,000.00
e-Journals						
Digital Database			DVD's 105	1,26,865.00		1,26,865.00
Miscellaneous		3,77,027.00		82,912.50		4,59,939.50

Centralized AC.
 Library Automation (NewGenLib2.0.0 Version).
 Open Access System.
 Circulation Service.
 Reference Service.
 OPAC Search Service.
 Internet Browsing Service.
 CD's/DVD's Browsing Service.
 Reprography.
 Newspaper Clipping Service.
 Information Display and Notification.
 Display of New Arrivals.
 Book Exhibition.
 Departmental Libraries.
 Power Back-up & Question Bank Services.

4.4 Technology up gradation (overall)

	Total Computers	Computer Labs	Internet	Browsing Centres	Computer Centres	Ofc	Departments	Others
Existing	283	52	283	52	52	50	77	-
Added	10	0	10	2	2		6	-
Total	293	52	293	54	54	50	83	-

4.5 Computer, Internet access, training to teachers and students and any other programme for technology upgradation (Networking, e-Governance etc.)

A demonstration regarding campus medicine was conducted on 17/12/2014 in the college auditorium. A software training programme conducted by the IT department on 25/1/2015 was attended by computer operators of all departments. A SEO – SMO orientation training for all faculties was conducted on 9/3/2016 & a campus medicine – Software training programme was organised on 8/6/2016 for all faculties.



4.6 Amount spent on maintenance in lakhs :

i) ICT	4.78
ii) Campus Infrastructure and facilities	24.35
iii) Equipments	58.44
iv) Others	117.78
Total :	205.35





Criterion V

Part – B

STUDENT SUPPORT AND PROGRESSION



Criterion – V

5. Student Support and Progression

5.1 Contribution of IQAC in enhancing awareness about Student Support Services

The college has constituted different committees under IQAC to strengthen the student support services. The committees are Student council committee, Student welfare committee, Women empowerment cell, Sexual harassment elimination cell, Parent Teacher meet, Alumni Association, Grievance redressal cell, Placement and Competitive examination cell, Mentorship, Slow and Advanced learners and remedial drill, and Counselling and Behavioural cell. Sports and cultural activities committee present. Every effort is made by the institution to enhance student support services across the campus. Student participating in governance to membership in various committees. All these are appropriately informed to student in student information leaflet and handbook. Every effort is made to create awareness of the student support services.

5.2 Efforts made by the institution for tracking the progression

The institute has maintained mechanism to track the progression of the student among different categories to higher education and placement.

5.3 (a) Total Number of students

UG	PG	Ph. D.	Others
150	75	-	-

(b) No. of students outside the state 58

(c) No. of international students 4

Men	No	%	Women	No	%
	106	47.1		119	52.9

Last Year						This Year					
General	SC	ST	OBC	Physically Challenged	Total	General	SC	ST	OBC	Physically Challenged	Total
						126	17	3	79		225
Demand ratio						Dropout % 0					

5.4 Details of student support mechanism for coaching for competitive examinations (If any)

The college has placement and competitive examination cell that provides guidance and orientation for competitive examination such as PG CET and All India Administrative services. The interns undergo these guidance programs

No. of students beneficiaries 92

5.5 No. of students qualified in these examinations

NET NA SET/SLET NA GATE NA CAT NA
 IAS/IPS etc NA State PSC NA UPSC NA Others 08 PG CET
KRLMPCA - 15

5.6 Details of student counselling and career guidance

The college has special committees for career guidance and counselling. Mentorship, slow and advanced learners, behaviour counselling, parent teacher meet are regularly utilised for counselling. The placement and competitive examination cell makes effort to enhance the capability of the student through soft skills, career counselling and personal counselling.

No. of students benefitted 10

5.7 Details of campus placement

<i>On campus</i>			<i>Off Campus</i>
Number of Organizations Visited	Number of Students Participated	Number of Students Placed	Number of Students Placed
NA	NA	NA	NA

Most of the passed out students are self employed and are working in Institution and Hospitals

5.8 Details of gender sensitization programmes

The institution expresses gender sensitization concern by establishing women empowerment cell and Vishaka committee. Through these committees gender sensitization activities are initiated. Every year awareness about the Vishaka guidelines , women empowerment, Beti Bachao, Beti Padhao, gender equity and international women’s day are initiated. The women strongly participate in female activities of community services such as creating awareness about female health care, care during pregnancy, lactation, vaccination, nutrition, mother and child care awareness about breast cancer, cervix cancer, and similar activities.

5.9 Students Activities

5.9.1 No. of students participated in Sports, Games and other events

State/ University level National level International level

No. of students participated in cultural events

State/ University level National level International level

5.9.2 No. of medals /awards won by students in Sports, Games and other events

Sports : State/ University level National level International level

Cultural: State/ University level National level International level

5.10 Scholarships and Financial Support

	Number of students	Amount
Financial support from institution		
Financial support from government	16	638180
Financial support from other sources	-	-
Number of students who received International/ National recognitions	-	-

5.11 Student organised / initiatives

Fairs : State/ University level National level International level

Exhibition: State/ University level National level International level

5.12 No. of social initiatives undertaken by the students

- Swach Bharat activities

AIDS awareness event

Beti Bachao Beti Padhao

Celebration of National Festival -Independence, Republic etc..

International Yoga Day.

Participation in Blood donation

5.13 Major grievances of students (if any) redressed:

IQAC has constituted a Grievence Redressal cell which monitors various grievences pertaining to students.
 No Major grievences heard.



Criterion VI

Part – B

GOVERNANCE, LEADERSHIP AND MANAGEMENT



Criterion – VI

6. Governance, Leadership and Management

6.1 State the Vision and Mission of the institution **OUR VISION**

Single window delivery of total human health care services

Total quality management in human health care Education ,Service, and research.

Promote unique work culture in alleviating Human sufferings.

To train general, specialized, advanced & allied health care professional Personnel to meet regional & national and global health care services demands

Work to contribute to global Human health care knowledge, skills& research .

Be efficient, effective, community acceptable, and excel in service Education & research.

To impart knowledge, & interact with organizations of similar interest.

Fostering global competencies, inculcating value system among learners

Promote use of technology of relevance

To induce paradigm shift in community that many human diseases are Preventable, Curable & Affordable

Reach the unreachable with awareness, education, research & service

Serve the under served

OUR MISSION

Learner centered Health Care Education

Patient centered service

Community oriented research

Strong community relationship

Serve the under served

Meet the regional, national and Global Health Care educational needs

Inter organizational linkage

Strategic future oriented planning

Excellence in knowledge, skills and service

Professionalism in management

Open organizational climate

6.2 Does the Institution has a management Information System

Yes – The College has campus medicine Software package process solutions including admission, academic, administration and financial practices and other processes in the institution.

6.3 Quality improvement strategies adopted by the institution for each of the following:

6.3.1 Curriculum Development

Strategies adapted for the quality improvement in curriculum development are
 Initiate mechanism process to identify deficiency in the curriculum of the affiliated university.
 Design value added activities in each of the courses including problem based learning, student centric methods, gender equity, environment, human values and professional ethics.

6.3.2 Teaching and Learning

The quality improvement strategies for teaching learning are ----
 To initiate innovative methods of teaching, teacher quality improvement, faculty development activities
 The teaching methods include student centric methods, participative and experimental learning and self learning through use of advanced ICT facilities.
 Teacher self performance appraisal and student feedback on faculty performance initiated
 The courses and programmes incorporate well identified course and programmes outcomes their attainment, measurement to meet the program specific objectives.

6.3.3 Examination and Evaluation

The examination and evaluation are guided by accrediting university which incorporates both formative and summative methods of assessment. Individual courses attainment is measured through Continuous Performance Assessment card on regular basis. Other methods of assessment are home assessment dissertation etc. Internal assessment examination

6.3.4 Research and Development

Committee for Research and sustenance is present.
 Conducts guest lecturers for research methodology, knowledge for making patent and intellectual property rights. Seed money provided, monitor publication by the faculty

6.3.5 Library, ICT and physical infrastructure / instrumentation

A well equipped spacious user friendly advanced library is present which meets the learner need of different programs and courses. Library keep updating its ICT and infrastructure facilities. Access to E-Journal, Documentation of IT facilities are provided

6.3.6 Human Resource Management

The Associate Dean Human Resource Monitors the existing and further needed human resource for varied process of system.

Feedback from different stakeholders like students, faculty, non-teaching staff, parents, alumni and patients are collected analyzed and actions are initiated. Self performance appraisal of faculty is used to improve the teacher quality on continuous basis. Grievance redressal cell is present on the campus which deals with grievances of students, patients and faculties. Staff welfare measures are present.

6.3.7 Faculty and Staff recruitment

The committee for faculty recruitment is present which consider qualification, experience, cadre designation PhD/Demographic location, special achievement and regulatory compliance. Efforts are made to recruit and maintain satisfactory ratio of both male and female.

6.3.8 Industry Interaction / Collaboration

The institution maintains very effective interaction with the neighbouring communities. It serves the population in and around through special care medical college and hospital with incorporated super speciality health care services. The college provides urban and rural health centres and maintain effective health care medical camps. The varied departments maintains collaboration for health care services in the communities such as school health care, female health care awareness, children health care, vaccination, senior citizen homes, mentally retarded homes and prison patients. In addition the institution makes collaboration for creating awareness about HIV, Tuberculosis, living with diabetes, hypertension and life style modification. The institution play a vital role in collaborating with central and state government scheme.

6.3.9 Admission of Students

Academic year 2014-15 – MBBS UG course - 150 intake
 General Merit - 135, SC – 09, ST-02, OBC- 52
CET: shall be a eligibility cum entrance examination namely Common Entrance Test, KRLMPCA for admission to UG course for the academic session 2014-15.
 The candidate should have completed 17 year on or before 31st day of December of the year of admission.

Shall have passed two years Pre University examination conducted by Department of Pre-University Education, Karnataka State, with English as one of the subjects and Physics, Chemistry and Biology as optional subjects. The candidate shall have passed subjects of English, Physics, Chemistry and Biology individually also.

After completion of + 2 schooling

1. Students should register for CET/KRLMPCA entrance examination and clear the examination.
 2. They should obtain 50% marks in the qualifying examination for General Merit and 40% marks for SC/ST/OBC category. 45% marks for physically disabled
 3. After announcement of the Qualifying examination results the eligible candidates are allotted the seats through CET & KRLMPCA authorities.
 4. The last date of admission will be announced by the RGUHS.
 5. After allotment of the seat students are registered in the college and admitted.
- * The documents will be verified.
 - * Original documents are collected & the same should be submitted to RGUHS within the stipulated date for admission approval.
 - * The details of the students will be entered in the admission register and entered in the proforma as desired by the RGUHS and the same information has been sent to RGUHS for admission approval and Medical Council of India for information.
 - * After verification of the documents the university will send the approval of the admission and allotted the register numbers for each student. The same register number will be continued throughout the course.

6.4 Welfare schemes for

Teaching	<p>Hospital provides free treatment for family members of all employees except consumables</p> <p>Group insurance scheme for all employees and students in case of mortality</p> <p>Accommodation provided for nursing staff at minimal rent of Rs . 300 per month with free water and electricity within campus</p> <p>Technicians and nurses are given GH salary for working on holiday.</p> <p>Employees provident fund</p> <p>Earn leave benefits</p> <p>Loans for employees</p>
----------	--

	Diwali festival advance Subsidized Transportation for faculty
Non-teaching	
Students	Student insurance, Management scholarship

6.5 Total corpus fund generated

6.6 Whether annual financial audit has been done Yes No

6.7 Whether Academic and Administrative Audit (AAA) has been done?

Audit Type	Rs. 5 Lakhs		Internal	
	Yes/No	Agency	Yes/No	Authority
Academic	Yes	Self	Yes	Self
Administrative	Yes	Self	Yes	Self

The college has designed and implemented an academic and administrative audit Performa, through which academic and administrative audit is done once in a year. In addition external audit is also performed by regulatory authorities once in a year.

6.8 Does the University/ Autonomous College declares results within 30 days?

For UG Programmes Yes No

For PG Programmes Yes No

6.9 What efforts are made by the University/ Autonomous College for Examination Reforms?

The affiliating university has initiated good number of examination reforms.

6.10 What efforts are made by the University to promote autonomy in the affiliated/constituent colleges?

No such autonomy to affiliated colleges provision is available in regulatory guidelines

6.11 Activities and support from the Alumni Association

Alumni meet once in a year and participate with academic deliberation and technology up gradation to contribute financially and sponsored work shop seminar, guest lecture etc.

6.12 Activities and support from the Parent – Teacher Association

Parent teacher meeting are held separately by pre-clinical and para-clinical and clinical parent teacher group. During such meeting parent give feedback on various topics of interest for institutional growth including curriculum, infrastructure, governance and social responsibilities.

6.13 Development programmes for support staff

Training is conducted for staff how to work with Microsoft office, excel, internet surfing and you tube. All the technical non teaching staff are provided with need based specific training and skill advancement as appropriate to their nature of work. All computer operators are trained for necessary working skills for their department

6.14 Initiatives taken by the institution to make the campus eco-friendly

Steps have been taken by the management to make paperless office by campus medicine, complete land connectivity.
Awareness has been created in hostels about wastage of water and food
Battery operated cars in the campus.
LED Bulbs and Solar Lamps are provided on the campus
Environment day celebrated



Criterion VII

Part – B

INNOVATIONS AND BEST PRACTICES



Criterion – VII

7. Innovations and Best Practices

7.1 Innovations introduced during this academic year which have created a positive impact on the functioning of the institution. Give details.

For the overall development of students enrichment courses like personality developments are conducted English & Kannada speaking classes are held for the students to help them better interact with the teachers as well as patients.

To improve student performance numerous awards have been conceptualized to as to motivate & boost the student performance in academics

7.2 Provide the Action Taken Report (ATR) based on the plan of action decided upon at the beginning of the year

Plan	Action Taken
For the overall development of students enrichment courses like personality developments are conducted	Faculty from all the departments have prepared good enrichment courses for improving the personality of the students.
English & Kannada speaking classes are held for the students to help them better interact with the teachers as well as patients.	Separate staff are appointed to improve the language skills of students both English & kannada. This helps in improving the communication skills of students for interacting with the patients
To improve student performance numerous awards have been conceptualized to as to motivate & boost the student performance in academics	Separate awards have been constituted so as to improve student performance in academics. Overall toppers & subject toppers receive special awards. During the graduation day

7.3 Give two Best Practices of the institution (*please see the format in the NAAC Self-study Manuals*)

Integrated Teaching (UG)
 Teacher quality

**Provide the details in annexure (annexure need to be numbered as i, ii,iii)*

7.4 Contribution to environmental awareness / protection (Re write)

Battery operated cars (non polluting vehicles) within the campus.



7.5 Whether environmental audit was conducted? Yes No

Periodically informal audits are conducted by the maintenance dept to improve the campus environment.

7.6 Any other relevant information the institution wishes to add. (for example SWOT Analysis)

Strengths

- Good number of research projects and publications by faculty
- Large number of patients enables adequate clinical exposure to the students
- Well – equipped library
- Internal quality assurance system

Weakness:

- Further improvement of research facilities

Opportunities:

- Programs for enrichment of faculty

Challenges:

- Improving patient care



8. Plans of institution for next year

Create more ICT facilities for students & staff in the library for advance learning.

Install LCD projectors in classrooms.

Hold seminars and journal clubs at regular intervals at the Dept, level

Strengthen student mentorship program

Strengthen feedback from patients in relation to quality of treatment & hospital facilities.

Planting of saplings in the campus to create environmental awareness/ protection

Name DR. SHRUTHI B.N

Name DR. SATHYA MURTHY. B.

Shruthi B.N

Sathy

Signature of the Coordinator, IQAC

Signature of the Chairperson, IQAC

Chairperson IQAS

Rajarajeswari Medical College & Hospital

Mysore Road, Bangalore





Part – C

ANNEXURES





Annexure – 1

Academic Calendar

From August 2014 To July 2015

Month	Event
August 2014	
1 st Week	I MBBS admission –fresh batch Breast feeding week programme
3 rd Week	Orientation to Medical Education for fresh batch
4 th Week	Language classes stars for fresh batch Fathers day – interaction with senior students CME- Microbiology department Eye donation awareness campaign Commencement of internship
September 2014	
5 th September 2014	Teacher’s Day PG Fresher’s course – Community Medicine
2 nd Week	National conference of Anesthesia
3 rd Week	Cervical Cancer Awareness programme
October 2014	
4 th to 6 th	IMSACON 2014 International Conference
November 2014	
2 nd Week	RGUHS PG Theory examination
2 nd & 3 rd	Roentgen’s Day celebrations Internal Assessment exam for UG
14 th Nov	Diabetes Day programme
3 rd Week	Para medical board theory examinations
4 th Week	Submission of Synopsis & Dissertation
December 2014	
1 st Week	AIDS awareness day programme CME programme – Pediatrics
2 nd Week	CME – Biochemistry department
3 rd & 4 th	RGUHS UG Theory examination
January 2015	
2 nd Week	Parents/teachers meeting RGUHS Practical/ Clinical examination
February 2015	
2 nd Week	Inter collegiate cultural /Sports fest
3 rd Week	Alumni Association Meet
4 th Week	Graduation day



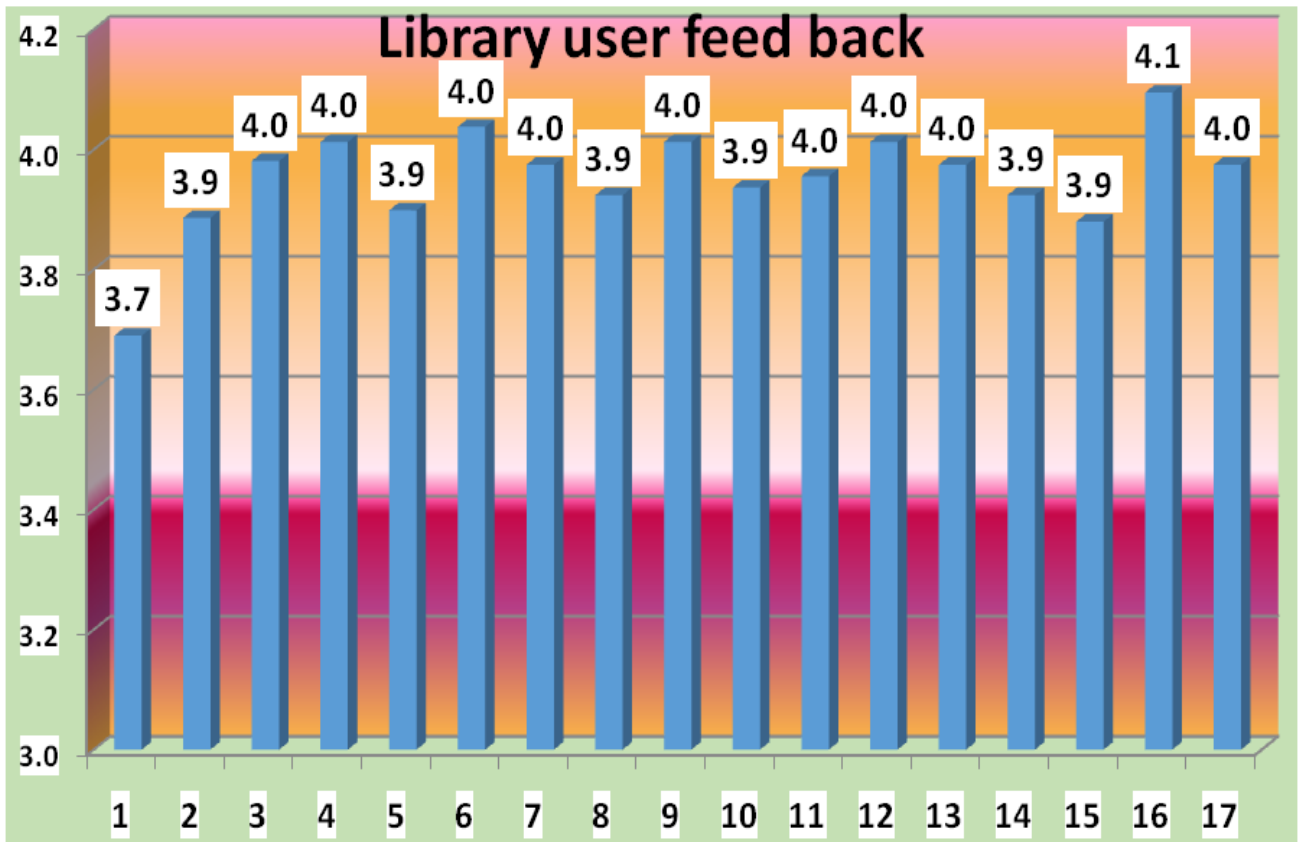


March 2015	
1 st Week	Commencement of Internship
2/3 rd Week	Symposium on Bone Health by Pharmacology Dept
April 2015	
1 st & 2 nd Week	Hostel Day
7 th	World Health Day
May 2015	
1 st Week	PG admissions
2 nd & 3 rd Week	UG Internal Assessment Examination RGUHS PG Theory Examination
3 rd & 4 th Week	RGUHS PG Practical /clinical examination
31 st	Anti Tobacco Day Celebration
June 2015	
2 nd & 3 rd Week	RGUHS UG Theory examination
4 th Week	UG Admissions
July 2015	
1 st July	Doctors Day celebration
2 nd Week	RGUHS practical /Clinical examination



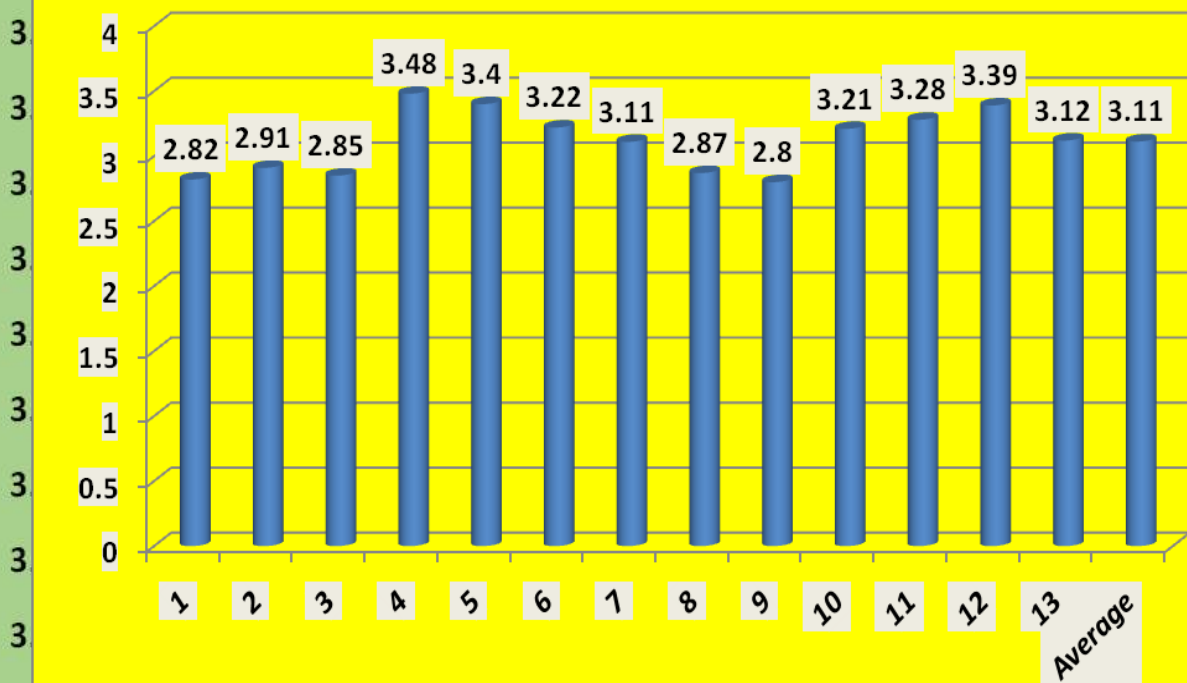
Annexure - 2

Analysis of Feedback



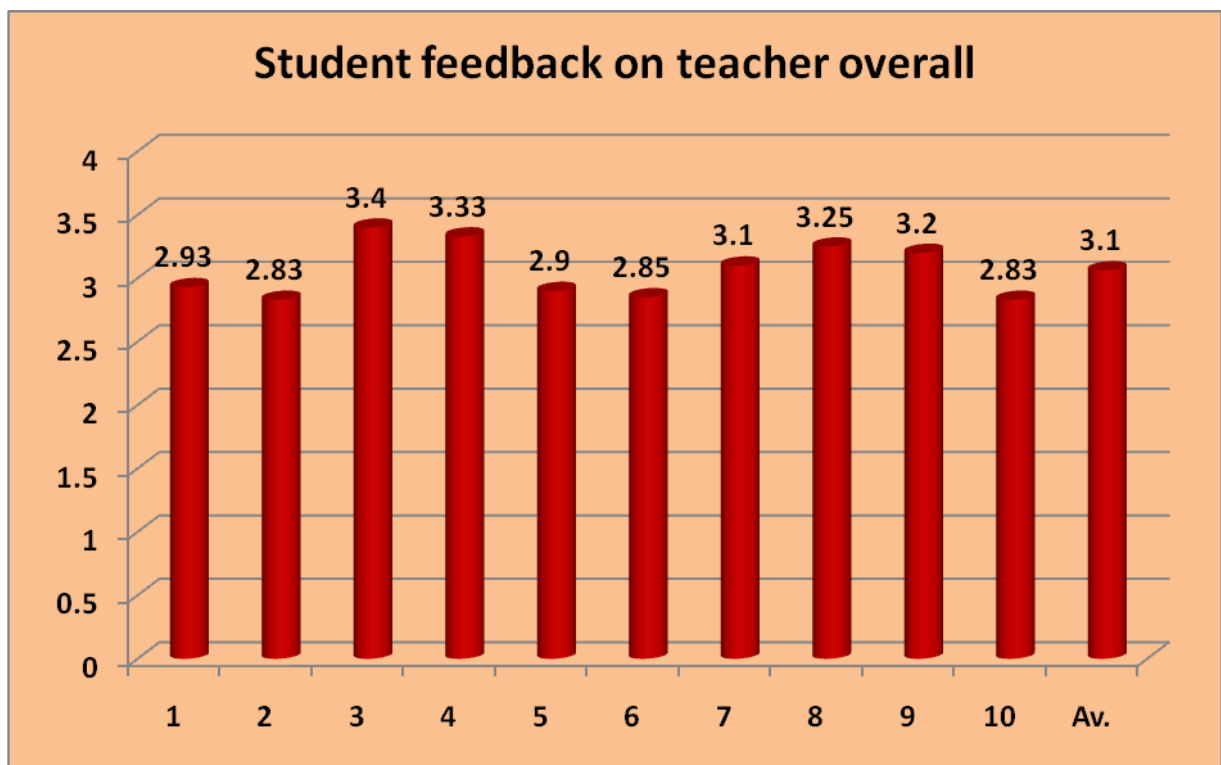


Parents Feedback



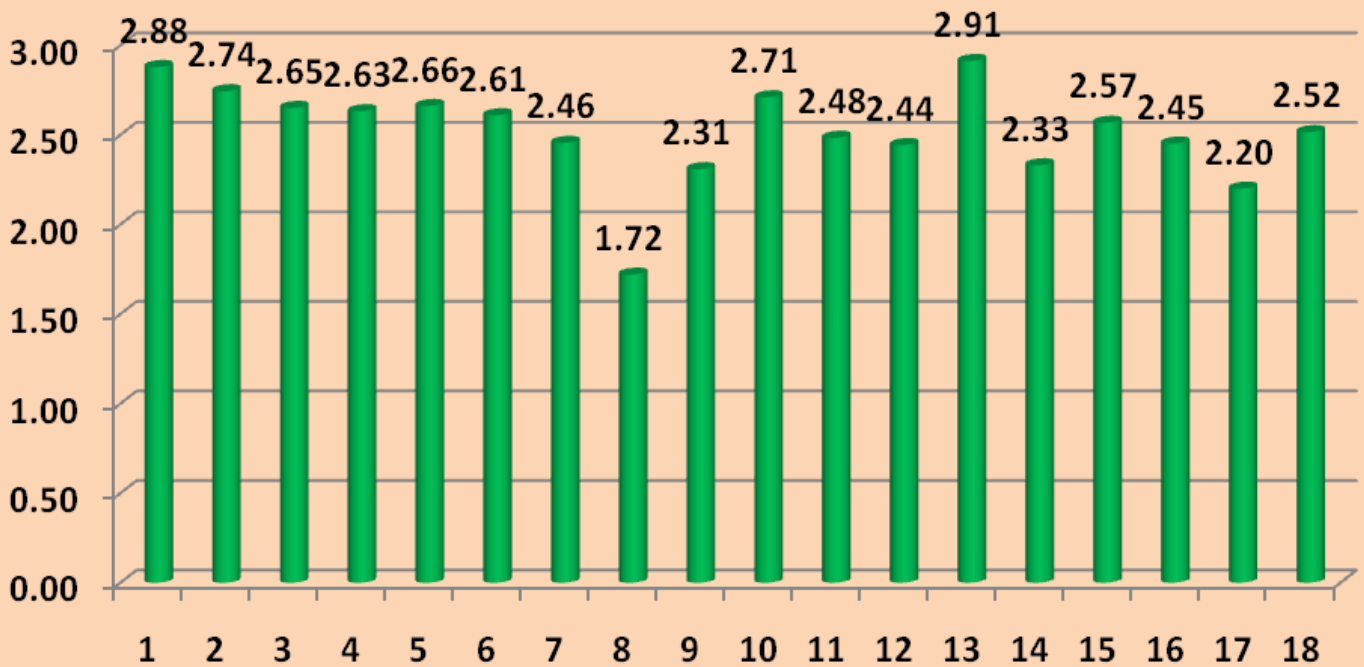


Student feedback on teacher overall



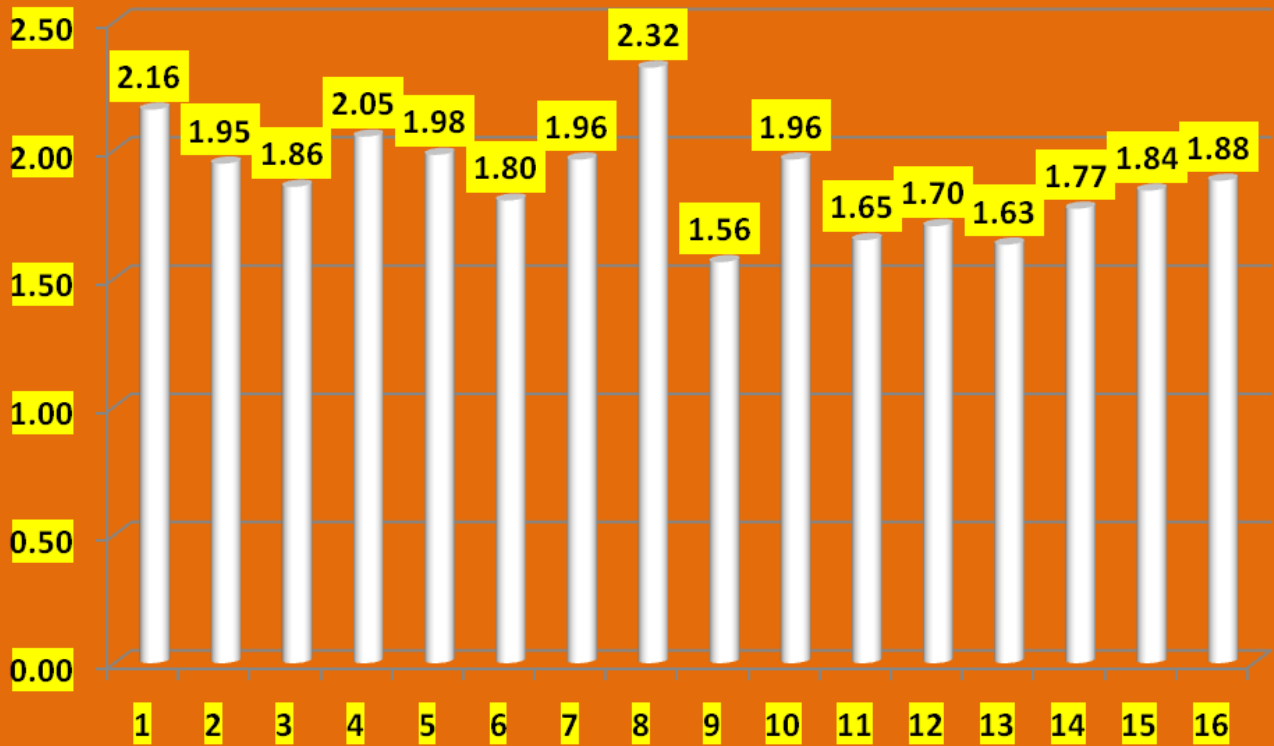


Evaluation Organisational Climate Feedback



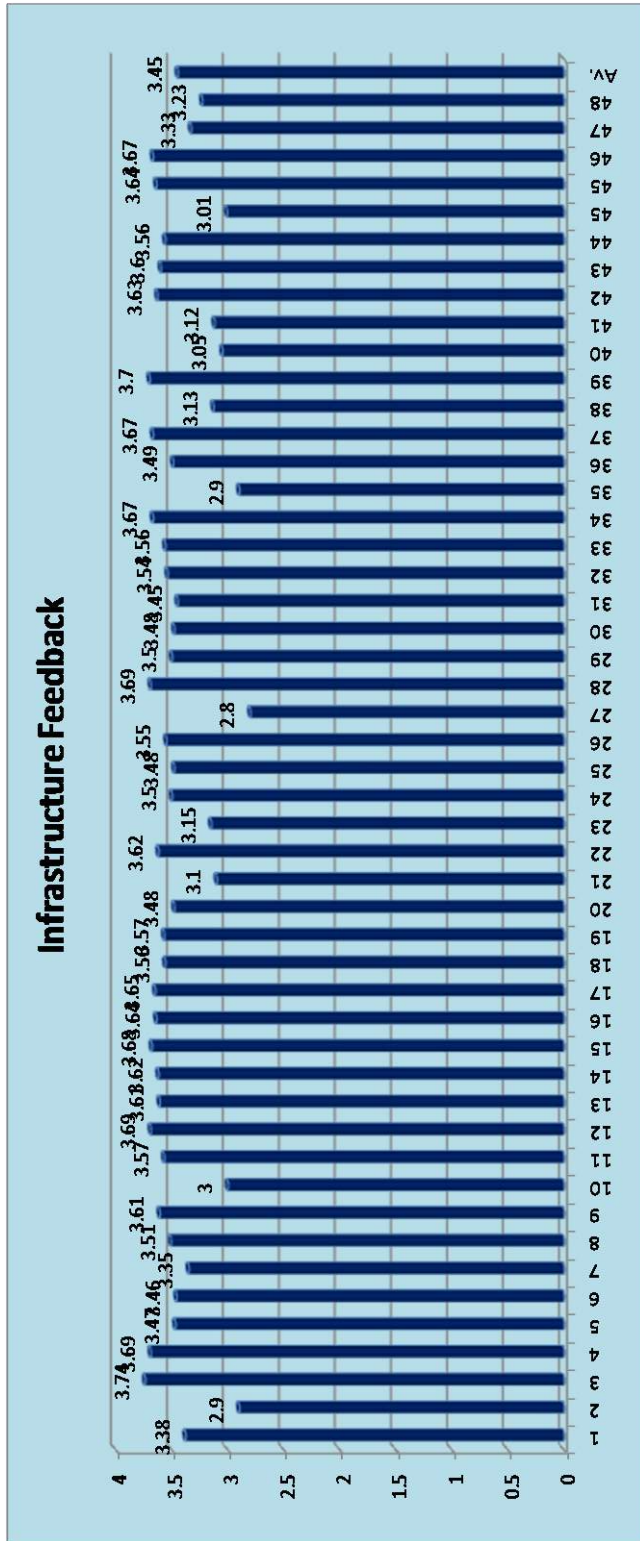


Overall Rating of Program by students



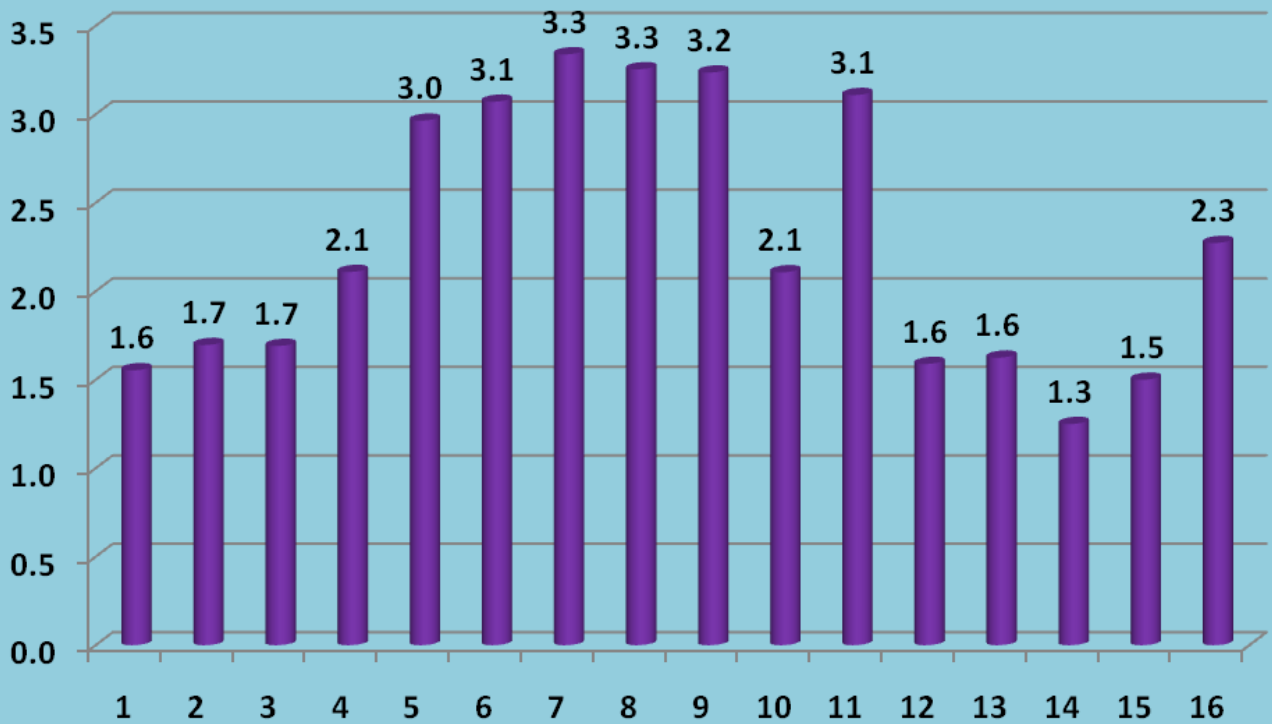
“Community Development Through Excellent Health care
Education, Service & Research Systems”







ALUMNI FEEDBACK



Annexure - 3

Best Practice 1

Title of Practice: Integrated Teaching (UG)

Objective: The intension of this practice is to provide proper understanding of a given subject in total.

The context: The regular theory class doesn't provide the students the complete picture of a given subject. The integrated teaching (vertical & horizontal) serves the purpose of providing complete information regarding a given subject & help the students in proper learning of difficult topics.

The Practice: The practice of integrated teaching (vertical & horizontal) involves selection of good topics. Faculty from various depts. Come together & present information regarding the topic indetaile & this process gives opportunity to the students for complete understanding of the given subject. This is conducted periodically.

Evidence of success: the system of integrated teaching has significantly boosted the performance of the undergraduate students which is reflected in the regular internal assessment tests.

Problems encountered: the main problem encountered is student attendance which is suitably taken care by the mentorship program.

Best Practice 2

Title of Practice: Teacher quality

Objective: The intention of this practice is to improve the knowledge & the skills of the teacher.

The context: good teacher quality is essential for improving the performance of the students.

The Practice: The faculty are encourage to participate in various national & international conferences. Research is given a top priority. Faculty is encouraged to attend workshops to improve the teaching skills periodically.

Evidence of success: this practice has significantly improved the teacher quality & subsequently the enhance the student performance.

Problems encountered: The main problem encountered is the financial resources, the institute provides financial aid to overcome this.

Annexure – 4

Equipment List

Sl. No.	Department	Equipment	Cost
1	Urology	OT Table (02 Nos)	1,02,85,250.00
2	Pediatric Surgery	OT Table	27,49,594.00
3	Plastic Surgery	OT Table	40,90,077.00
4	Surgery	OT Table	26,70,469.00
5	CTVS	OT Table	54,95,179.00
6	Neurosurgery	OT Table	53,64,675.00
7	Ophthalmology	Ophthalmic Ultrasound A-Scan	1,89,000.00
8	Anaesthesia	Surgical Scrub Station (Three Bay)	1,75,000.00
9	Cardiology	Activated Clotted Time Test Machine	2,00,000.00
10	OBG	OT Table	3,50,000.00
11	Radiology	Volume Probe for HD-11XE Ultrasound	7,56,900.00
12	Radiology	Linear Probe for HD-6 Ultrasound	2,88,400.00
13	TB&CD	Video Bronchoscope (with accessories)	11,00,000.00
14	Blood Bank	Blood Collection Monitor	1,25,000.00
15	Blood Bank	Tube Sealer	1,25,000.00
16	CRL	Spectrophotometer	6,95,000.00
17	ENT	Microdebrider Hand piece	4,40,000.00
18	Urology	Lap. Camera System	14,45,500.00
19	Urology	Monitor with stand	3,14,580.00
20	Urology	Ligh Source & Cable	2,20,150.00
21	Urology	Uretero Renoscope – 8fr	2,75,100.00
22	Urology	Uretero Renoscope – 7fr (02 Nos)	5,50,200.00
23	Pediatric	Transport Incubator & Photothe. Unit	6,40,000.00
24	Blood Bank	Horizontal Autoclave	2,70,000.00
26	OBG	CO2 Insufflator (Endoflator)	3,32,220.00
27	OBG	Hysteroscope (Telescope) – 4mm	2,03,000.00
28	OBG	Hysteroscope (Telescope) – 5mm	1,85,150.00
29	Physiology	Polygraph	1,20,000.00
30	Pediatric	Baby Warmer with Photothe.Unit (03)	20,40,000.00
31	OBG	LED.OT Light, Twin Dome	5,06,000.00
32	CTVS	Ventilator (03 Nos)	21,81,045.00
33	CRL	CO2 Incubator with built in Gas Guard	5,40,000.00
34	CTVS	Xenon Light Source & Head Light	3,54,000.00
35	CRL	Gradient PCR	7,12,918.00
36	CRL	Vertical Electrophoresis	1,98,839.00
38	CRL	Horizontal Electrophoresis	1,05,286.00
39	CRL	PDA Detector	6,75,000.00
40	CTVS	Dual Chamber Temp.Pacemaker	2,50,000.00



41	Anaesthesia	Scrub Station (Single Bay)	1,56,500.00
42	Anaesthesia	Scrub Station (Double Bay)	1,85,282.00
43	Pediatric	Multipara Monitor with Wifi & IBP	1,47,000.00
44	Pediatric	Multipara Monitor with CO2, Wifi & IBP	2,96,200.00
45	Urology OT	Surgical Diathermy (Cautery)	9,32,190.00
46	Ortho	Surgical Diathermy (Cautery)	9,32,190.00
47	CTVS	Surgical Diathermy (Cautery)	3,99,700.00
48	GE Surgery (OT)	Surgical Diathermy (Cautery)	3,99,700.00
49	Neuro surgery	Surgical Diathermy (Cautery)	3,99,700.00
50	Pediatric Surgery	Surgical Diathermy (Cautery)	3,99,700.00
51	Plastic Surgery	Surgical Diathermy (Cautery)	3,99,700.00
52	Anaesthesia	Ane.Workstn. (Blease Sirius) – 04	1,17,85,146.00
53	Anaesthesia	Ane.Workstn.(Blease Focus II) – 05	
54	Anaesthesia	Multipara Monitor -07	
55	Anaesthesia	EtCO2 - 03 Nos	
56	Anaesthesia	BIS Module - 03 Nos	
57	Anaesthesia	AGM Module -04 Nos	
58	Urology	Siremobil C Arm	31,50,000.00
59	Radiology	800mA X-ray with IITV	19,00,000.00
60	CTVS	Equipments & Instruments	20,57,881.00
61	CTVS	Equipments & Instruments	9,97,794.00
		Total	5,71,58,039.00





Annexure - 5

Extension Activities 2014-15

The Management and Staff of RRMCH has conducted Swatch Bharath Campaign during 2014-15. A rally was organized by the students and staff in the Urban Health Training Centre areas and cleanliness drive was organized within the campus of RRMCH.

On the occasion of World AIDS Day every year rally is organized by the Dept of Community Medicine, Dept of Dermatology & Dept of OBG: (UHTC – RHTC) - 2014-15 . Photography, Collage and short movie making Competitions were held during all the years.

A quiz Competition was held to commemorate the birth day of Dr. Robert Koch. Teachers day was celebrated by the students of RRMCH in the year 2014-15.

World Anti-Tobacco Day is commemorated annually by organizing rallies in the field practice areas and organizing health education events at various factories and educational institutions.

A short movie was produced and directed by the students to address the issue of stigma and discrimination against TB patients was played.

Dept of Community Medicine observes World Health Day on 7th April every year by conducting poster, collage, quiz, short movie competitions with special focus on the World Health Day theme of that particular year.

Dept of Community Medicine observes World Environment Day on June 5th every year by planting saplings in the RRMCH campus and in the Urban and Rural Health Centre areas.

Free Health Camp was conducted by the dept of Community Medicine at an old age home near the Urban Health Centre area and Sweets, fruits and Medicines were distributed to the elderly people.