



RAJARAJESWARI MEDICAL COLLEGE & HOSPITAL

#202, Kambipura, Mysore Road
Bangalore: 560074

Accredited by NAAC with "A" Grade

Annual Quality Assurance Report (AQAR) of Internal Quality Assurance Cell (IQAC) of the Institution for the year 2016-17

Submitted to



राष्ट्रीय मूल्यांकन एवं प्रत्यायन परिषद्

विश्वविद्यालय अनुदान आयोग का स्वायत्त संस्थान

NATIONAL ASSESSMENT AND ACCREDITATION COUNCIL

An Autonomous Institution of the University Grants Commission

P. O. Box. No. 1075, Opp: NLSIU, Nagarbhavi, Bangalore - 560 072 India





CONTENTS

Sl. No.	Contents	Page Nos.
PART A		
	Details of the Institution	3
	IQAC Composition and Activities	8
PART B		
	Criterion – I: Curricular Aspects	11
	Criterion – II: Teaching, Learning and Evaluation	14
	Criterion – III: Research, Consultancy and Extension	18
	Criterion – IV: Infrastructure and Learning Resources	26
	Criterion – V: Student Support and Progression	29
	Criterion – VI: Governance, Leadership & Management	34
	Criterion – VII: Innovations and Best Practices	41
Annexures		
	Academic Calendar	46
	Analysis of Student Feedback	48
	Best Practices 1	56
	Best Practices 2	57
	Equipment List	58
	Extension Activities	59





Part – A

Details of the Institution





RAJARAJESWARI MEDICAL COLLEGE & HOSPITAL BANGALORE

The Annual Quality Assurance Report (AQAR) of the IQAC

Part – A

I. Details of the Institution

1.1 Name of the Institution

Rajarajeswari Medical College

1.2 Address Line 1

Kambipura, Mysore Road,

Address Line 2

BENGALURU

City/Town

BENGALURU

State

KARNATAKA

Pin Code

560074

Institution e-mail address

rajarajeswarimedicalcollege@yahoo.
com

Contact Nos.

080-28437444

Name of the Head of the Institution:

Dr. H.V. Shetty

Tel. No. with STD Code:

080-28437444.





Mobile:

9481201007

Name of the IQAC Co-ordinator:

Dr. Shruthi B N

Mobile:

9686530303

IQAC e-mail address:

iqac.rrmch@gmail.com

Name of the IQAC Joint
Co-ordinator:

Dr. Rekha N H

Mobile:

9844456277

1.3 NAAC Track ID (For ex. MHCOGN 18879)

KACOGN-16507 DATED: 23-02-2013

1.4 NAAC Executive Committee No. & Date:

(For Example EC/32/A&A/143 dated 3-5-2004.
This EC no. is available in the right corner- bottom
of your institution's Accreditation Certificate)

EC/66/A&A/096

1.5 Website address:

www.rrmch.org

Web-link of the AQAR:

www.rrmch.org/quality-initiatives/naac/aqar

For ex. <http://www.ladykeanecollege.edu.in/AQAR2012-13.doc>

1.6 Accreditation Details





Sl. No.	Cycle	Grade	CGPA	Year of Accreditation	Validity Period
1	1 st Cycle	A	3.05	2014	5 YEARS
2	2 nd Cycle	-	-	-	-
3	3 rd Cycle	-	-	-	-
4	4 th Cycle	-	-	-	-

1.7 Date of Establishment of IQAC : DD/MM/YYYY

07-01-2013

1.8 AQAR for the year (for example 2010-11)

2016-17

1.9 Details of the previous year's AQAR submitted to NAAC after the latest Assessment and Accreditation by NAAC ((for example AQAR 2010-11 submitted to NAAC on 12-10-2011))

- i. AQAR _____ 2014-15 submitted to NAAC _____ (23/01/2018)
- ii. AQAR _____ 2015-16 submitted to NAAC _____ (23/01/2018)
- iii. AQAR _____ 2016-17 submitted to NAAAC _____ (23/01/2018)

1.10 Institutional Status

University State Central Deemed Private

Affiliated College Yes No

Constituent College Yes No

Autonomous college of UGC Yes No

Regulatory Agency approved Institution Yes No

(eg. AICTE, BCI, MCI, PCI, NCI)

Type of Institution Co-education Men Women

Urban Rural Tribal

Financial Status Grant-in-aid UGC 2(f) UGC 12B

Grant-in-aid + Self Financing Totally Self-financing



1.11 Type of Faculty/Programme

Arts Science Commerce Law PEI (Phys Edu)

TEI (Edu) Engineering Health Science Management

Others (Specify)

NIL

1.12 Name of the Affiliating University (*for the Colleges*)

Rajiv Gandhi University of Health Sciences, Bangalore

1.13 Special status conferred by Central/ State Government-- UGC/CSIR/DST/DBT/ICMR etc

Autonomy by State/Central Govt. / University

University with Potential for Excellence UGC-CPE

DST Star Scheme UGC-CE

UGC-Special Assistance Programme DST-FIST

UGC-Innovative PG programmes Any other (*Specify*)

UGC-COP Programmes

2. IQAC Composition and Activities

2.1 No. of Teachers	12
2.2 No. of Administrative/Technical staff	3
2.3 No. of students	-
2.4 No. of Management representatives	1
2.5 No. of Alumni	1
2.6 No. of any other stakeholder and community representatives	1
2.7 No. of Employers/ Industrialists	1
2.8 No. of other External Experts	1
2.9 Total No. of members	20
2.10 No. of IQAC meetings held	4

2.11 No. of meetings with various stakeholders:	No.	7	Faculty	1
Non-Teaching Staff		1	Alumni	1
Students		1	Others	4

2.12 Has IQAC received any funding from UGC during the year? Yes No

If yes, mention the amount -

2.13 Seminars and Conferences (only quality related)

(i) No. of Seminars/Conferences/ Workshops/Symposia organized by the IQAC

Total Nos.	2	International	-	National	-	State	-	Institution Level	2
------------	---	---------------	---	----------	---	-------	---	-------------------	---

(ii) Themes

Creating awareness among students about swatch Bharat, gender issues and aids awareness. ISR, red cross society activities.

2.14 Significant Activities and contributions made by IQAC

Student progression monitoring, student centric methods in teaching learning process
 Constitution of examination grievance redressal cell to attend to examination related issues.
 Review of program and course outcome, methods of attainment of outcomes.
 Continuous performance assessment cards as methods of attainment of outcomes.
 Infrastructure argumentation and maintenance of physical facilities
 Separate website for alumni association, performance review, audited statement of accounts.

2.15 Plan of Action by IQAC/Outcome

The plan of action chalked out by the IQAC in the beginning of the year towards quality enhancement and the outcome achieved by the end of the year *

Plan of Action	Achievements
Increase effective implementation of value added and enrichment courses across all departments and to encourage enrolment of students.	All departments have designed and implemented value added enrichment courses in there department and all students are encouraged to enrol for such courses.
Initiate activities regarding gender equity, environment, human values and professional ethics.	Activities are initiated as per the plan.
Make efforts for linkages, MOU with institution.	Continuous efforts are under way.
Initiate Yoga and meditation as value adding for personality development.	Yoga teacher is appointed and intensive actions are in place to integrate yoga at appropriate level.
Initiate improvements in physical facilities.	This is ongoing activity all through the year, maintenance of entire campus, buildings, library, IT and sports facilities are in placed.



* Attach the Academic Calendar of the year as Annexure.

2.15 Whether the AQAR was placed in statutory body Yes No
Management - Syndicate - Any other body

Provide the details of the action taken

The AQAR was placed before the governing council, and recommended proposal AQAR was approved by the said body





Criterion I

Part – B

CURRICULUR ASPECTS



Part – B
Criterion – I

I. Curricular Aspects

1.1 Details about Academic Programmes

Level of the Programme	Number of existing Programmes	Number of programmes added during the year	Number of self-financing programmes	Number of value added / Career Oriented programmes
PhD	01	-	-	-
PG	20	-	-	ENRICHMENT - 80
UG	03	01	-	PBL - 150
Diploma	06	-	-	-
Advanced Diploma	-	-	-	-
Certificate	02	-	-	--
Others	04	-	-	-
Total	36	01	-	230
Interdisciplinary	-	-	-	-
Innovative	-	-	-	-

- 1.2 (i) Flexibility of the Curriculum: CBCS/Core/Elective option / Open options
 (ii) Pattern of programmes:

Pattern	Number of programmes
Semester	-
Trimester	-
Annual	36

1.3 Feedback from stakeholders* Alumni YES Parents YES Employers YES Students YES
 (On all aspects)

Mode of feedback : Online Manual YES Co-operating schools (for PEI)

*Please provide an analysis of the feedback in the Annexure



1.4 Whether there is any revision/update of regulation or syllabi, if yes, mention their salient aspects.

NIL

1.5 Any new Department/Centre introduced during the year. If yes, give details.

NIL



Criterion II

Part – B

TEACHING- LEARNING AND EVALUATION



Criterion – II

2. Teaching, Learning and Evaluation

2.1 Total No. of permanent faculty	Total	Asst. Professors	Associate Professors	Professors	Others
	541	100	50	88	303

2.2 No. of permanent faculty with Ph.D.	5
---	---

2.3 No. of Faculty Positions Recruited (R) and Vacant (V) during the year	Asst. Professors		Associate Professors		Professors		Others		Total	
	R	V	R	V	R	V	R	V	R	V
	100	-	50	-	88	-	303	-	541	-

2.4 No. of Guest and Visiting faculty and Temporary faculty	-
---	---

2.5 Faculty participation in conferences and symposia:

No. of Faculty	International level	National level	State level
Attended	0	41	95
Presented papers	1	20	41
Resource Persons	2	11	35

2.6 Innovative processes adopted by the institution in Teaching and Learning:

Conduct of Assignments, tutorials, Class room tests and Group discussions on Case studies.
 Smart class rooms were started.

2.7 Total No. of actual teaching days during this academic year	248
---	-----

2.8 Examination/ Evaluation Reforms initiated by the Institution (for example: Open Book Examination, Bar Coding, Double Valuation, Photocopy, Online Multiple Choice Questions)

- 3 Internal Assessments tests are conducted periodically in each year. The average of 2 best internals are taken into consideration & sent to the university.
- A minimum of 35% percentage eligibility is mandatory for appearing in university examinations
- All the issues including grievances regarding the internal assessment scores will be looked into if

it appears to be valid & the necessary actions will be taken .

2.9 No. of faculty members involved in curriculum restructuring/revision/syllabus development as member of Board of Study/Faculty/Curriculum Development workshop 9

2.10 Average percentage of attendance of students 80%

2.11 Course/Programme wise distribution of pass percentage :

Title of the Programme	Total no. of students appeared	Division				
		Distinction %	I %	II %	III %	Pass %
MBBS	806	1.86	17.86	17.61	25.43	62.77

2.12 How does IQAC Contribute/Monitor/Evaluate the Teaching & Learning processes :

Adherence to academic calendar

Curriculum delivery process effectively monitored

Slow learners identified remedial drill initiated. Advanced learners encouraged to participate in higher skill and knowledge platform

Implemented feedback recommendation

Ambience that caters to different needs of learners

Efforts to improve teacher quality through FDP

Continuous performance assessment card initiated

Course and program feed back collected, analysed and action initiated.

Working knowledge of Computers ,Internet, Wifi- provided to students as well as teachers

2.13 Initiatives undertaken towards faculty development



<i>Faculty / Staff Development Programmes</i>	<i>Number of faculty benefitted</i>
Refresher courses	-
UGC – Faculty Improvement Programme	-
HRD programmes	28
Orientation programmes	222
Faculty exchange programme	-
Staff training conducted by the university	10
Staff training conducted by other institutions	12
Summer / Winter schools, Workshops, etc.	
<u>Others</u>	
PG research methodology workshop	72
MET workshop for faculty	150

2.14 Details of Administrative and Technical staff

Category	Number of Permanent Employees	Number of Vacant Positions	Number of permanent positions filled during the Year	Number of positions filled temporarily
Administrative Staff	172		48	
Technical Staff	148		33	





Criterion III

Part – B

RESEARCH, CONSULTANCY AND EXTENSION



Criterion – III

3. Research, Consultancy and Extension

3.1 Initiatives of the IQAC in Sensitizing/Promoting Research Climate in the institution

The college has constituted committee for research and development. The committee plans implements and monitors the activities of research with 4 perspectives – research promotion, research facilities, resources mobilization and publications. As a part of research promotion activities the college conducts research methodology sessions, orientation lectures on how to make patent, intellectual property right every year. Conducts compulsory central research unit, research equipment training to each PG , such as spectro photo meter, colorie meter, refracto meter, HPLC etc. Seed money provided to encourage to such activities. Orientation for H index, impact factor, sitation index, range and average are delt by central research unit. The advanced central research unit is provided with research scholar.

Teachers are encouraged to publish in journals . Faculties are encouraged to publish books and chapters and appropriate incentives are provided.

3.2 Details regarding major projects

	Completed	Ongoing	Sanctioned	Submitted
Number	-	3	2	-
Outlay in Rs. Lakhs	-	-	900,000	-

3.3 Details regarding minor projects

	Completed	Ongoing	Sanctioned	Submitted
Number	01	-	-	-
Outlay in Rs. Lakhs	1 Lakh	-	-	-

3.4 Details on research publications

	International	National	Others
Peer Review Journals	28	48	-
Non-Peer Review Journals	-	05	-
e-Journals	9	11	-
Conference proceedings	-	-	-

3.5 Details on Impact factor of publications:

Range Average h-index Nos. in SCOPUS

3.6 Research funds sanctioned and received from various funding agencies, industry and other organisations

Nature of the Project	Duration Year	Name of the funding Agency	Total grant sanctioned	Received
Major projects	-	-	-	-
Minor Projects	-	-	-	-
Interdisciplinary Projects	-	-	-	-
Industry sponsored	-	-	-	-
Projects sponsored by the University/ College	-	-	-	-
Students research projects <i>(other than compulsory by the University)</i>	2 Months	04 ICMR	40000	40000
Any other(Specify)	-	-	-	-
Total	-	-	40000	40000

3.7 No. of books published i) With ISBN No. Chapters in Edited Books

ii) Without ISBN No.

3.8 No. of University Departments receiving funds from

UGC-SAP CAS DST-FIST
 DPE DBT Scheme/funds

3.9 For colleges
 Autonomy CPE DBT Star Scheme
 INSPIRE CE Any Other (specify)
 VGST

3.16 No. of patents received this year

Type of Patent		Number
National	Applied	-
	Granted	-
International	Applied	-
	Granted	-
Commercialised	Applied	-
	Granted	-

3.17 No. of research awards/ recognitions received by faculty and research fellows
 Of the institute in the year

Total	International	National	State	University	Dist	College
12	-	12	-	-	-	-

3.18 No. of faculty from the Institution who are Ph. D. Guides and students registered under them

02

01

3.19 No. of Ph.D. awarded by faculty from the Institution

-

3.20 No. of Research scholars receiving the Fellowships (Newly enrolled + existing ones)

JRF 02 SRF 02 Project Fellows - Any other -

3.21 No. of students Participated in NSS events:

University level - State level -

National level - International level -

3.22 No. of students participated in NCC events:

University level	-	State level	-
National level	-	International level	-

3.23 No. of Awards won in NSS:

University level	-	State level	-
National level	-	International level	-

3.24 No. of Awards won in NCC:

University level	-	State level	-
National level	-	International level	-

3.25 No. of Extension activities organized

University forum	-	College forum	57	
NCC	-	NSS	-	Any other
				-

3.26 Major Activities during the year in the sphere of extension activities and Institutional Social Responsibility. Refer annexure 5 page no. 59

Apr to Jun - 2016

Sl No	Date	Activities	Venue
1	13.04.16	Diabetic Camp	KR Halli
2	15.04.16	General Health checkup	Kamidoddi, Huliurdurga
3	21.04.16	World Health Day-Diabetic Camp	Channasandra
4	22.04.16	Diabetic Camp	Bidadi
5	28.04.16	World Health Day-Diabetic Camp	Agara
6	13.05.16	Diabetic Camp	Bidadi
7	17.05.16	General Health Camp	Bhadrapura, Ramanagara
8	03.06.16	Diabetic Camp	Bidadi
9	15.06.16	Health Camp-Construction workers	West of Chord Road
10	17.06.16	Health Camp	Electronic City
11	22.06.16	Health Camp-Construction workers	Kommaghatta
12	23.06.16	Health Camp-Construction workers	Kommaghatta
13	24.06.16	Diabetic Camp	Bidadi
14	30.06.16	Health Camp	Subbarayanapalya

Jul to Sep - 2016

Sl No	Date	Activities	Venue
1	03.07.16	Health Camp	KR Halli
2	03.07.16	Health Camp	Shettigowdanadoddi
3	03.07.16	Health Camp	Karenahalli
4	04.07.16	Health Camp-Construction workers	Kaniminike
5	05.07.16	Health Camp-Construction workers	Kaniminike
6	06.07.16	Health Camp-Construction workers	Kaniminike
7	15.07.16	Diabetic Camp	Kadumane, Bidadi
8	31.07.16	General Health Camp	Kommaghatta
9	03.08.16	World Breast Feeding Week	KR Halli
10	05.08.16	Diabetic Camp	Bidadi
11	07.08.16	Health Camp-Govt School	Narasegowdanadoddi
12	08.08.16	Health Camp-Govt High School	Bhuvanewari Nagara
13	09.08.16	Health Camp-Govt School	Vijayanagara
14	13.08.16	Health Camp- Govt School	Vasanthapura
15	16.08.16	Health Camp-Govt School	Govindarajanagara
16	17.08.16	Health Camp-Rajarajeswari School	Vidyapeetha Circle
17	18.08.16	Diabetic Camp	Sunkadakatte
18	21.08.16	Health Camp	KR Halli
19	23.08.16	Health Camp- Kamala Nehru School	Near Indira Nursing Home
20	24.08.16	Health Camp- Vivekananda School	Hosakerehalli
21	29.08.16	Health Camp-Govt School	Arundati Nagara
22	29.08.16	Health Camp- Govt School	Chikkalasandra
23	04.09.16	Health Camp-Govt School	Ganakal
24	05.09.16	Health Camp-Govt School	Marenahalli
25	18.09.16	Health Camp-Infant Jesus Church	Moodalapalya
26	19.09.16	Health Camp-Govt School	Jaraganahalli
27	20.09.16	Health Camp-Govt School	Turahalli



28	23.09.16	Health Camp & Padmasree Inauguration	Bhyrohalli
29	26.09.16	Health Camp-Govt School	Hosakerehalli
30	27.09.16	Health Camp-Govt School	Near Sallapuradamma Temple

Oct to Dec - 2016

Sl No	Date	Activities	Venue
1	06.10.16	Health Camp	Nayandahalli
2	09.10.16	Health Camp - Govt School	Kempadyapanahalli
3	21.10.16	General Health Camp	Mandya
4	06.11.16	General Health Camp	Shikshakara sadana, KG Road
5	06.11.16	Health Camp - Govt School	Bettamgere
6	04.12.16	Health Camp - Govt School	Chikkanahalli
7	24.12.16	Health Awareness on HIV	ITI College, Ramanagara
8	30.12.16	Anganawadi Health Camp	Abbanakuppe

Jan to Mar - 2017

Sl No	Date	Activities	Venue
1	06.01.17	Health Camp	Chowkahalli, Bidadi
2	13.01.17	Anganawadi Health Camp	Kanchuganahalli, Bidadi
3	23.01.17	General Health Camp-Road Safety Wek	Town Hall, Bangalore
4	10.02.17	General Health Camp	Old Age Home, Kambipura
5	10.02.17	General Health Camp	B. Hosahalli, Bidadi

Swach Bharat activities organised

AIDS Awareness programme conducted





Criterion IV

Part – B

INFRASTRUCTURE AND LEARNING RESOURCES



Criterion – IV

4. Infrastructure and Learning Resources

4.1 Details of increase in infrastructure facilities:

Facilities	Existing	Newly created	Source of Fund	Total
Campus area	25 acres	Nil	Nil	-
Class rooms	6	Nil	Nil	-
Laboratories	10	Nil	Nil	-
Seminar Halls	56	-	-	-
No. of important equipments purchased (≥ 1-0 lakh) during the current year.	Enclosed in Annexure 4			
Value of the equipment purchased during the year (Rs. in Lakhs)				
Others				

4.2 Computerization of administration and library

Central library automated by using NGL 2.0.0 version (NewGenLib) for the library technical operations and it is integrated with RFID Technology KIOSK- Self Issue, Return, Renewal & document search, Gate Antenna

4.3 Library services:

	Existing		Newly added		Total	
	No.	Value	No.	Value	No.	Value
Text Books	6028	40,42,116.00	36	45,160.00	6064	40,87,276.00
Reference Books	457	3,89,800.00	100	1,22,659.00	557	5,12,459.00
Print Journals	159	70,47,707.00	158	63,17,374.00		1,33,65,081.00
e-Books		10,06,000.00		12,46,000.00		22,52,000.00
e-Journals						
Digital Database						
Miscellaneous				1,65,633.50		1,65,633.00

Centralized AC.
 Library Automation (NewGenLib2.0.0 Version).
 Open Access System.
 Circulation Service.
 Reference Service.
 OPAC Search Service.



Internet Browsing Service.
 CD's/DVD's Browsing Service.
 Reprography.
 Newspaper Clipping Service.
 Information Display and Notification.
 Display of New Arrivals.
 Book Exhibition.
 Departmental Libraries.
 Power Back-up & Question Bank Services

4.4 Technology up gradation (overall)

	Total Computers	Computer Labs	Internet	Browsing Centres	Computer Centres	Office	Departments	Others
Existing	293	53	303	55	57	52	86	-
Added	10	0	10	0	0	5	5	-
Total	313	53	313	55	57	57	91	-

4.5 Computer, Internet access, training to teachers and students and any other programme for technology upgradation (Networking, e-Governance etc.) (Re Wirte)

A demonstration regarding campus medicine was conducted on 17/12/2014 in the college auditorium. A software training programme conducted by the IT department on 25/1/2015 was attended by computer operators of all departments. A SEO – SMO orientation training for all faculties was conducted on 16/3/2016 & a campus medicine – Software training programme was organised on 17/6/2016 for all faculties.

4.6 Amount spent on maintenance in lakhs :

i) ICT	13.19
ii) Campus Infrastructure and facilities	107.12
iii) Equipments	0.38
iv) Others	135.74
Total :	256.43





Criterion V

Part – B

STUDENT SUPPORT AND PROGRESSION



Criterion – V

5. Student Support and Progression

5.1 Contribution of IQAC in enhancing awareness about Student Support Services

The college has constituted committee for student support services. This committee not only makes effort to provide comprehensive student support services and also enhances awareness about student support services. The various student support services fall under academic administrative examination and student comforts. Few such services provided are student mentorship, slow and advanced learners, and remedial drill. Specially abled and female friendly infrastructure, examination grievance cell, behavioural counselling, community exposure for holistic development, state of the art ICT facilities, internet, WI-FI and digital library. Student insurance, management scholarship for student, student council, excellent cultural and sports activities. Women empowerment cell, Vishaka committee, parent teacher meet, anti ragging cell, alumni meet, and student participate in governance through committees and by providing feedback on varies subjects. Every effort is made to make students support services exceed the learner requirements. Excellent placement and competitive examination training facilities, review of student progression to higher education, initiation of awards, medals for sports and cultural activities. Special support it provided for student capability enhancement activities.

5.2 Efforts made by the institution for tracking the progression

The college has instituted mechanism for student progression and its tracking from admission till completion of the program and continuing to higher education, employment, placement and other member of alumni association. The progression tracking of student data categories wise and year wise is maintained.

5.3 (a) Total Number of students

UG	PG	Ph. D.	Others
150	72	-	-

(b) No. of students outside the state 88

(c) No. of international students 3

Men	No	%	Women	No	%
	80	74.3		142	125.7

Last Year						This Year					
General	SC	ST	OBC	Physically Challenged	Total	General	SC	ST	OBC	Physically Challenged	Total
152	5	2	10		169	166	14	4	38		222

Demand ratio Dropout % 0

5.4 Details of student support mechanism for coaching for competitive examinations (If any)

The college has established placement and competitive examination cell under IQAC. This competitive examination cell provides guidance for Post graduate PG CET. Library provides resource materials. The college has conducted competitive classes at orientation for UPSC examination including administrative services as a part of capability enhancement of students in such examination many development schemes are implemented. Which include soft skill development, bridge courses, yoga and meditation, personnel counselling, bridge courses, English and regional language speaking and career courses.

No. of students beneficiaries 95

5.5 No. of students qualified in these examinations

NET	NA	SET/SLET	NA	GATE	NA	CAT	NA
IAS/IPS etc	NA	State PSC	NA	UPSC	NA	Others	CET 05 KRLMPCA - 10

5.6 Details of student counselling and career guidance

The college has established student counselling and carrier guidance process and mechanism. Student counselling is a ongoing continuous process from beginning to completion of the program till placement or joining the higher education. Counselling is practiced at different levels – Mentor council menaces and course co-ordinator counsel during CPA assessment of their student. Slow and advanced learners committee provides such counselling. In addition the college has behaviour cell for which students not improved by above classes are referred to this cell. Carreer guidance is provided by placement cell. Interns undergo orientation theory regarding self employment. Different job opportunities are made aware to the eligible student.

No. of students benefitted 03

5.7 Details of campus placement

<i>On campus</i>			<i>Off Campus</i>
Number of Organizations Visited	Number of Students Participated	Number of Students Placed	Number of Students Placed
NA	NA	NA	NA

Most of the passed out students either go for higher education or self employment. No such campus placement

5.8 Details of gender sensitization programmes

The college has unique mechanism for implementing gender sensitizing program. The women empowerment cell conducts international women’s day every year. This cell provides knowledge and empowers the female with life skills including awareness of the law pertaining to female, nutrition and health related awareness in the female community. The committee create awareness regarding the laws pertaining to sexual harassment elimination through display boards and guest lecturers.

5.9 Students Activities

5.9.1 No. of students participated in Sports, Games and other events

State/ University level National level International level

No. of students participated in cultural events

State/ University level National level International level

5.9.2 No. of medals /awards won by students in Sports, Games and other events

Sports : State/ University level National level International level

Cultural: State/ University level National level International level

5.10 Scholarships and Financial Support

	Number of students	Amount
Financial support from institution	20	2,00,000
Financial support from government	29	705470
Financial support from other sources	-	-
Number of students who received International/	-	-

National recognitions		
-----------------------	--	--

5.11 Student organised / initiatives

Fairs : State/ University level National level International level

Exhibition: State/ University level National level International level

5.12 No. of social initiatives undertaken by the students

5.13 Major grievances of students (if any) redressed:

IQAC has constituted a Grievence Redressal cell which monitors various grievences pertaining to students.
 No Major grievences addressed



Criterion VI

Part – B

GOVERNANCE, LEADERSHIP AND MANAGEMENT





Criterion – VI

6. Governance, Leadership and Management

6.1 State the Vision and Mission of the institution

OUR VISION

Single window delivery of total human health care services
Total quality management in human health care Education ,Service, and research.
Promote unique work culture in alleviating Human sufferings.
To train general, specialized, advanced & allied health care professional Personnel to meet regional & national and global health care services demands
Work to contribute to global Human health care knowledge, skills& research .
Be efficient, effective, community acceptable, and excel in service Education & research.
To impart knowledge, & interact with organizations of similar interest.
Fostering global competencies, inculcating value system among learners
Promote use of technology of relevance
To induce paradigm shift in community that many human diseases are Preventable, Curable & Affordable
Reach the unreachable with awareness, education, research & service
Serve the under served

OUR MISSION

Learner centered Health Care Education
Patient centered service
Community oriented research
Strong community relationship
Serve the under served
Meet the regional, national and Global Health Care educational needs
Inter organizational linkage
Strategic future oriented planning
Excellence in knowledge, skills and service
Professionalism in management
Open organizational climate



6.2 Does the Institution has a management Information System

Yes – The College has campus medicine Software package for lead basis solutions including admission, academic, administration and financial practices and other processes in the institution

6.3 Quality improvement strategies adopted by the institution for each of the following:

6.3.1 Curriculum Development

Curriculum committee constituted at all departments, which review existing curricula of the affiliating university . Identifying the gaps, utilises course and program feedback by students and alumini feedback. The committee designs and implement value added courses in all department.

6.3.2 Teaching and Learning

To improve teacher quality by orienting key aspects of teaching learning, working knowledge skill in computer, internet and use of ICT facilities. Teachers are provided with intensive faculty development program.
Student centric method, advanced ICT facilities, experimental and participative learning are initiated.

6.3.3 Examination and Evaluation

The affiliating university provides appropriate guidelines, mechanism and processes for smooth and transparent conduct of examinations. The college conducts other internal assessment examination and evaluate as per the regulatory guidelines. The departments have prepared continuous performance assessment card.

6.3.4 Research and Development

Under IQAC the college has constituted committee for research and development. This committee strongly encourages research activities at UG, PG and research level. Research culture and a conducive climate maintained on the campus to research methodology session, how to make patent and guest lecture on intellectual property right.
This committee reviews and update research promotion, resources mobilization, infrastructure and publications. Faculties are deputed to gain additional research skill.
Guest lecture on impact factor, citation index, H-index, SPOUS, range, average are arranged.

6.3.5 Library, ICT and physical infrastructure / instrumentation

The college has constituted library advisory committee, committee for ICT and committee for infrastructure maintenance under IQAC. These committees monitors the varied related activities. Library services are improved, ICT facilities enhanced, physical infrastructure optimally utilised. Need based expansion of physical infrastructure and instrumentation initiated.

6.3.6 Human Resource Management

Human resource management cell assesses the status of the type and quality of human resource need as per regulatory requirement. The HRM cell initiate action to maintain sanction HR to meet regulatory requirements. The HRM cell has established performance assessment, performance appraisal and confidential report, mechanisms for continuous improvement among the faculty and non teaching staff. The HRM conducts appropriate training for technical non teaching staff department wise.

6.3.7 Faculty and Staff recruitment

The human resource management strictly follows the recruitment guidelines of the regulatory bodies. The recruitment committee evaluate the requirement of number of faculties in terms of qualification, experience, designation, PhD, advanced skills, geographic locations and speciality specific skills. The HR himself maintains gender equity while recruiting the faculty. Faculty with PhD qualification outside the state are preferred.

6.3.8 Industry Interaction / Collaboration

The institution maintains effective interaction with the community and improves collaborations. The institution serve the community through rural and urban centres and tertiary care hospital services. The college implement government skills to serve the population. The institution serves the community to raise the standard of awareness of critical diseases including HIV, Polio, Cancer, Nutrition, Yoga and similar activities. Provides the health care services through health camps. The central research cell with advanced recruitments and training facilities maintain inter institutional collaborations.

6.3.9 Admission of Students

Academic year 2016-17 – MBBS UG course - 150 intake
 General Merit - 125, SC – 10, ST-04, OBC- 11
CET: shall be a eligibility cum entrance examination namely Common Entrance Test &
NEET: shall be a eligibility cum entrance examination namely National Eligibility-Cum-Entrance Test for admission to UG course for the academic session.
 The candidate should have completed 17 year on or before 31st day of December of the year of admission.
 shall have passed two years Pre University examination conducted by Department of Pre-University Education, Karnataka State, with English as one of the subjects and Physics,

Chemistry and Biology as optional subjects. The candidate shall have passed subjects of English, Physics, Chemistry and Biology individually also.

After completion of + 2 schooling

1. Students should register for NEET entrance examination and clear the examination
2. They should obtain 50% marks in the qualifying examination for General Merit and 40% marks for SC/ST/OBC category. 45% marks for physically disabled
3. After announcement of the NEET results the eligible candidates have to register their names in the Karnataka Examination Authority for documents verification.
4. The option entry will be there to opt the seats through online in two rounds.
5. The final round counseling will be conducted at Karnataka Examination Authority.
6. The last date of admission will be announced by the RGUHS.
7. The admission process will be doing as per RGUHS calendar of events.
8. The last date is for admission is 30th August of that particular academic year.

Any changes may be made by MCI & DME.

After allotment of the seat students are registered in the college and admitted.

- * The documents will be verified.
- * Original documents are collected & the same should be submitted to RGUHS within the stipulated date for admission approval.
- * The details of the students will be entered in the admission register and entered through online in the RGUHS website for admission approval and Medical Council of India for information.
- * After verification of the documents the university will send the approval of the admission and allotted the register numbers for each student. The same register number will be continued throughout the course.

6.4 Welfare schemes for

Teaching	Hospital provides free treatment for family members of all employees except consumables Group insurance scheme for all employees and students in case of mortality Founders day celebration Accomadation provided for nursing staff at minimal rent of Rs . 300 per month with free water and electricity within campus Technicians and nurses are given GH salary for working on holiday. Nurse's day, doctor's day, women's day celebration
Non teaching	
Students	

6.5 Total corpus fund generated

6.6 Whether annual financial audit has been done Yes No

6.7 Whether Academic and Administrative Audit (AAA) has been done?

Audit Type	External		Internal	
	Yes/No	Agency	Yes/No	Authority
Academic	Yes	Self	Yes	Self
Administrative	Yes	Self	Yes	Self

6.8 Does the University/ Autonomous College declares results within 30 days?

For UG Programmes Yes No

For PG Programmes Yes No

6.9 What efforts are made by the University/ Autonomous College for Examination Reforms?

The affiliating university has initiated good number of examination reforms.

6.10 What efforts are made by the University to promote autonomy in the affiliated/constituent colleges?

No such autonomy to affiliated colleges provision is available in regulatory guidelines

6.11 Activities and support from the Alumni Association

The college has registered alumni association. The alumni association has its own website for better functioning of alumni. The college conducts annual alumni meet. The college monitors for constant improvement in alumni membership. The varied activities of alumni are -during their meet they provide valuable inputs for continuous improvement, skill and knowledge enhancement among the out going graduate through feedback system. Feedback provides information on improvements in curriculum delivery, teacher quality, library, infrastructure and such similar parameters. The college maintains effective audited alumni account.

6.12 Activities and support from the Parent – Teacher Association

The college conducts separate parent teacher meet for pre-clinical, para-clinical and clinical students. The objective of the parent teacher meet is appraise the performance of the student in front of concerned parents and teacher. Both parent and teacher make continuous effort to increase knowledge and skill of the outgoing student. Parents also provide feedback on improvement for infrastructure, library, transport, hospital and student support services etc. during parent teacher meet.

6.13 Development programmes for support staff

The college has constituted staff welfare committee under IQAC. All departments have initiated appropriate need based staff development programs. Every effort are made by the department to update the skills of technical staff in their speciality. The department computer operator are specially trained on effective and efficient working knowledge of computers, internet and WI-FI facilities. Few of the faculties are deputed for gaining the additional skills to other institute.

6.14 Initiatives taken by the institution to make the campus eco-friendly

Energy efficient lighting-LED lights and energy efficient PL lamps are used in the college.

The Existing RO plants supply potable water for the entire college.

Some of the other eco- initiatives are rain water harvesting system, Segregation of waste, Solar powered lights, Safe disposal of laboratory wastes are in place.

A lot of stress is given on gardening and tree plantation.

Entire college campus is made No Smoking Zone .

Use of Renewable Energy. Solar hot water systems are used in the hostel.

Battery operated cars are used in campus



Criterion VII

Part – B

INNOVATIONS AND BEST PRACTICES



Criterion – VII

7. Innovations and Best Practices

7.1 Innovations introduced during this academic year which have created a positive impact on the functioning of the institution. Give details.

Immediate supplementary examinations after declarations of results (RGUHS)

Grievance redressal cell for staff & students.

Employees state insurance scheme medical service.

7.2 Provide the Action Taken Report (ATR) based on the plan of action decided upon at the beginning of the year

Plan	Action Taken
Immediate supplementary examinations after declarations of results (RGUHS)	Immediate supplementary examination has been started by the Rajiv Gandhi University provides a good opportunity for students to improve their academic performance & to join the mainstream branch.
Grievance redressal cell for staff & students.	Grievance redressal committee constituted by the institute helps in proper clearance of the all the grievances of students & faculty regularly
Employees state insurance scheme medical service.(ESI)	ESI scheme provides good medical services for the patients enrolled This ensures a constant source of patients for the hospital inturn providing opportunity for students to improve the clinical skills.

7.3 Give two Best Practices of the institution (*please see the format in the NAAC Self-study Manuals*)

Student Mentorship program
 HELINET facility in Library for advanced learning. Resources.

**Provide the details in annexure (annexure need to be numbered as i, ii,iii)*

7.4 Contribution to environmental awareness / protection

1. Initiation of waste recycling plant in the campus –(under process)
2. Promotion of usage of battery operated vehicles. (non polluting vehicles in campus)



7.5 Whether environmental audit was conducted? Yes No

Periodically informal audits are conducted by the maintenance dept to improve the campus environment.

7.6 Any other relevant information the institution wishes to add. (for example SWOT Analysis)

Strength:

- State of the art library & HELINET facility
- Large patient base provides facilities for clinical skill training

Weakness:

- Improve research facilities

Opportunities:

- Conducting faculty enrichment program in collaboration with national & international universities.

Challenges:

- Stream lining PG research programs



8. Plans of institution for next year

Strengthen coaching for competitive examination to student.
Encourage students to participate in co-curricular activities.
Support students by way of providing financial support through scholarship through govt. and institution.
Strengthen HRD management by way of filling vacant posts.
Create more opportunity for collaboration
Strengthen parents - teacher association

Name DR. SHRUTHI B.N

Name DR. SATHYA MURTHY. B.

Shruthi B.N

Sathyamurthy B.

Signature of the Coordinator, IQAC

Signature of the Chairperson, IQAC

Chairperson IQAS

Rajarajeswari Medical College & Hospital
Mysore Road, Bangalore





Part – C

ANNEXURES



Annexure – 1

Academic Calendar

From August 2016 To July 2017

Month	Event
August 2016	
1 st Week	I MBBS admission –fresh batch
	Breast feeding week programme
3 rd Week	Orientation to Medical Education for fresh batch
4 th Week	Language classes starts for fresh batch
	Fresher’s Day – interaction with senior students
September 2016	
5 th September 2016	Teacher’s Day
	PG Fresher’s course – Community Medicine
2 nd Week	National conference of Anesthesia
3 rd Week	Cervical Cancer Awareness programme
October 2016	
1 st week	Commencement of Internship
2 nd & 3 rd week	PG Theory examination
	PG Practical Examination
November 2016	
2 nd & 3 rd	Roentgen’s Day celebrations
	Internal Assessment exam for UG
14 th Nov	Diabetes Day programme
3 rd Week	Para medical board theory examinations
4 th Week	Submission of Synopsis & Dissertation
December 2016	
1 st Week	AIDS awareness day programme
2 nd Week	
3 rd & 4 th	RGUHS UG Theory examination
January 2017	
2 nd Week	Parents/teachers meeting
	RGUHS Practical/ Clinical examination

February 2017	
2 nd Week	Inter collegiate cultural /Sports fest
3 rd Week	Alumni Association Meet
4 th Week	Graduation day
March 2017	



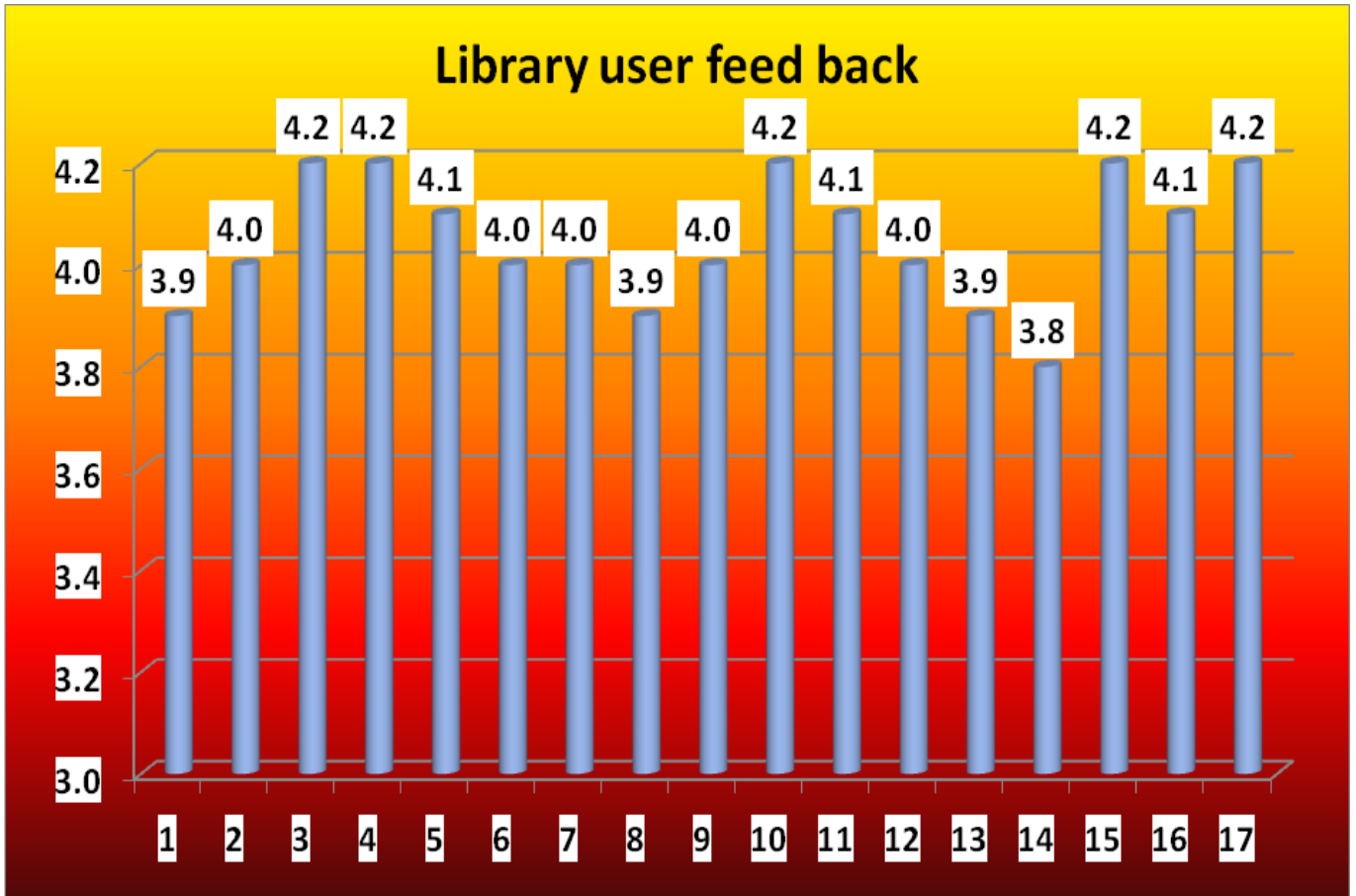
1 st Week	
2/3 rd Week	Commencement of Internship
4 th week	Graduation Day
April 2017	
1 st & 2 nd Week	Hostel Day
7 th	World Health Day
May 2017	
1 st Week	PG admissions
2 nd & 3 rd Week	UG Internal Assessment Examination
	RGUHS PG Theory Examination
3 rd & 4 th Week	RGUHS PG Practical /clinical examination
31 st	Anti Tobacco Day Celebration
June 2017	
1 st week	PG Fresher' Day
2 nd & 3 rd Week	RGUHS UG Theory examination
4 th Week	UG Admissions
July 2017	
1 st July	Doctors Day celebration
2 nd & 3 rd Week	RGUHS practical /Clinical examination





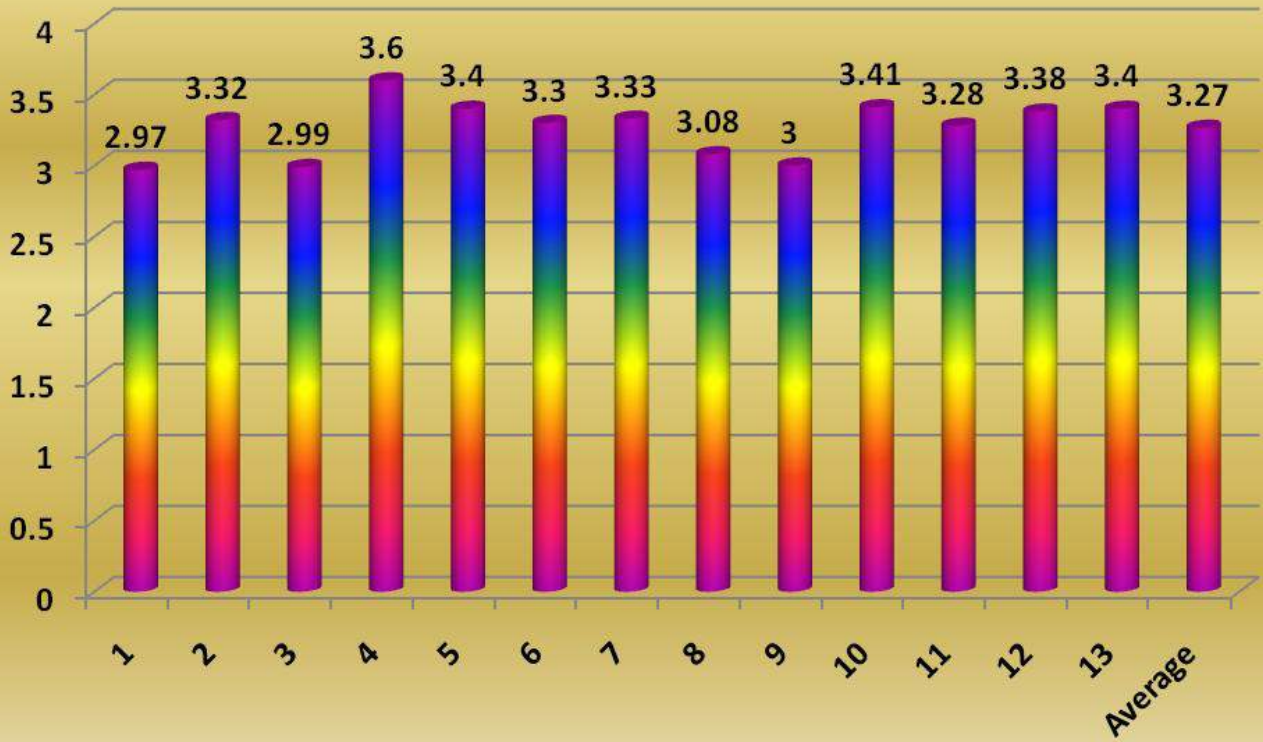
Annexure - 2

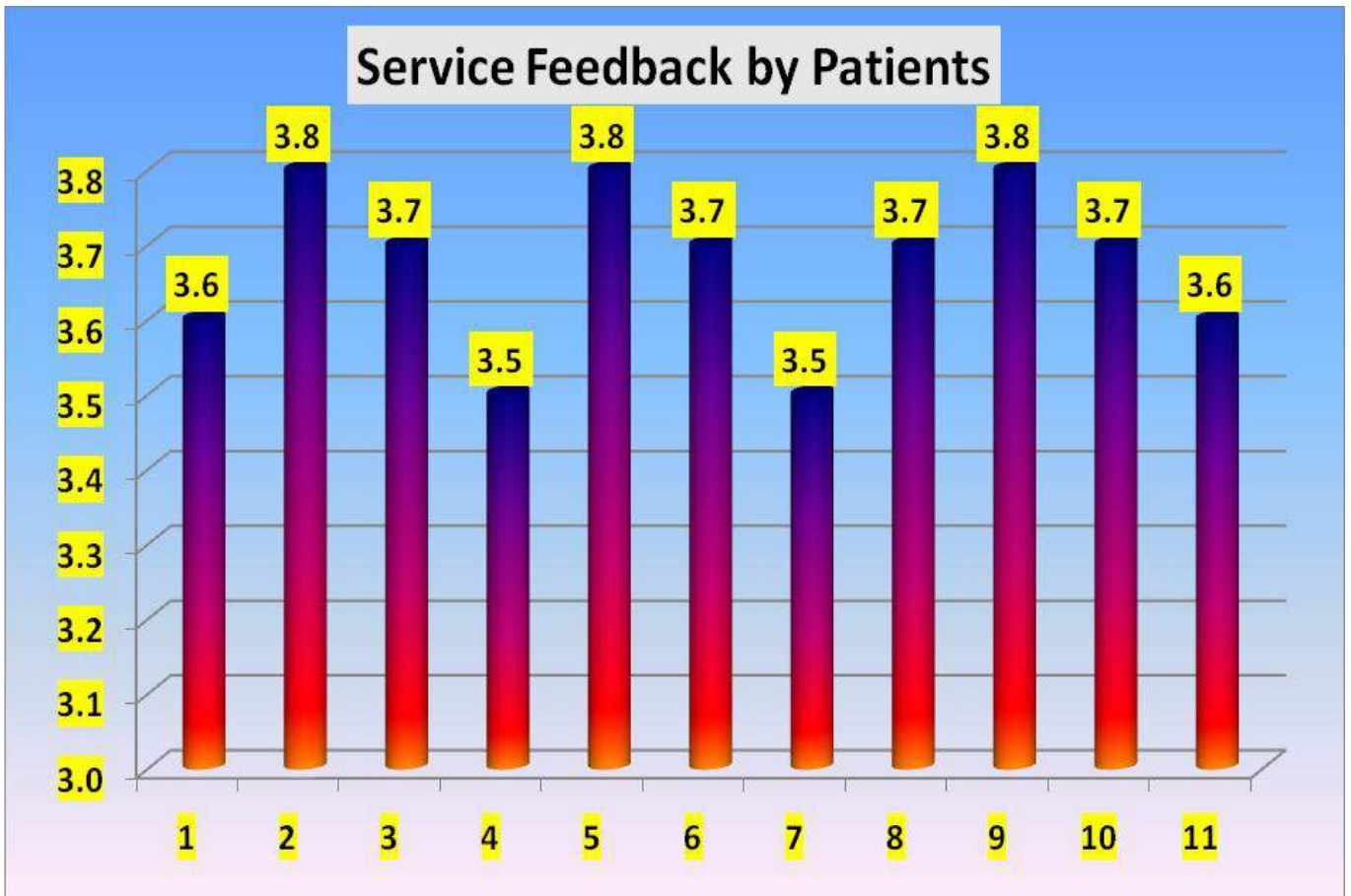
Analysis of Student Feedback





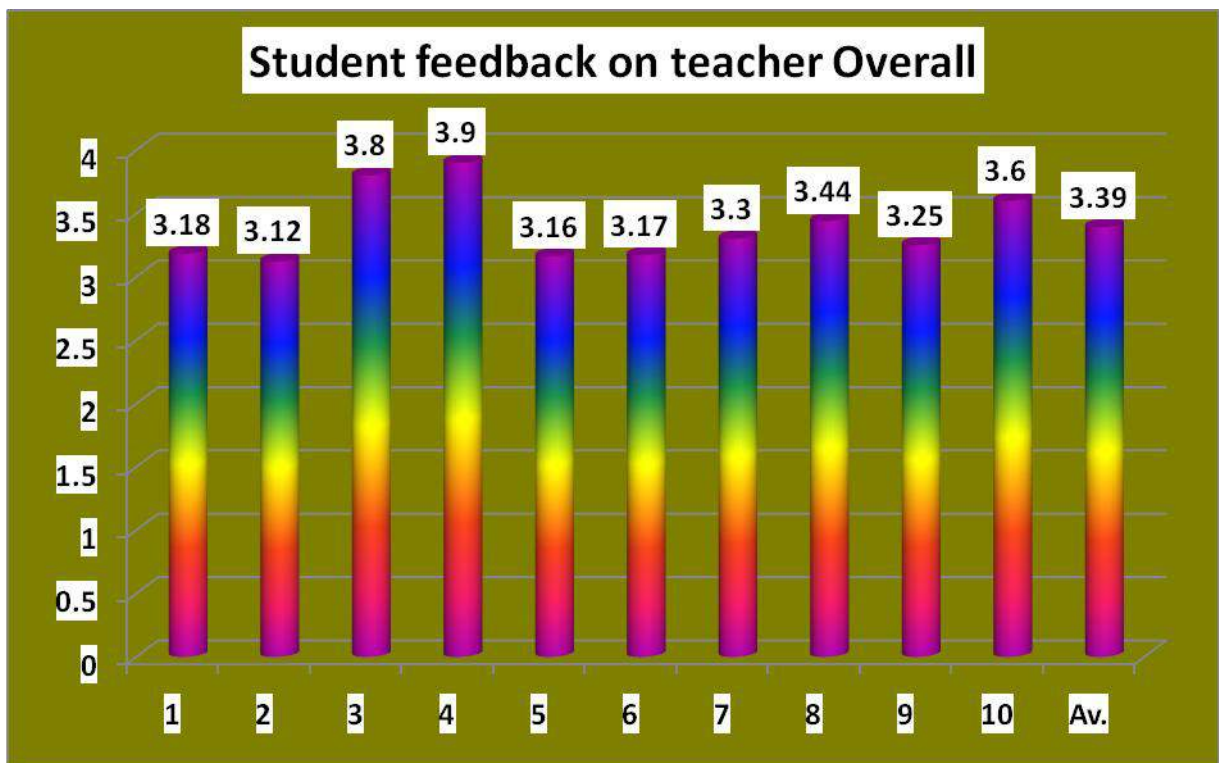
Parents Feedback





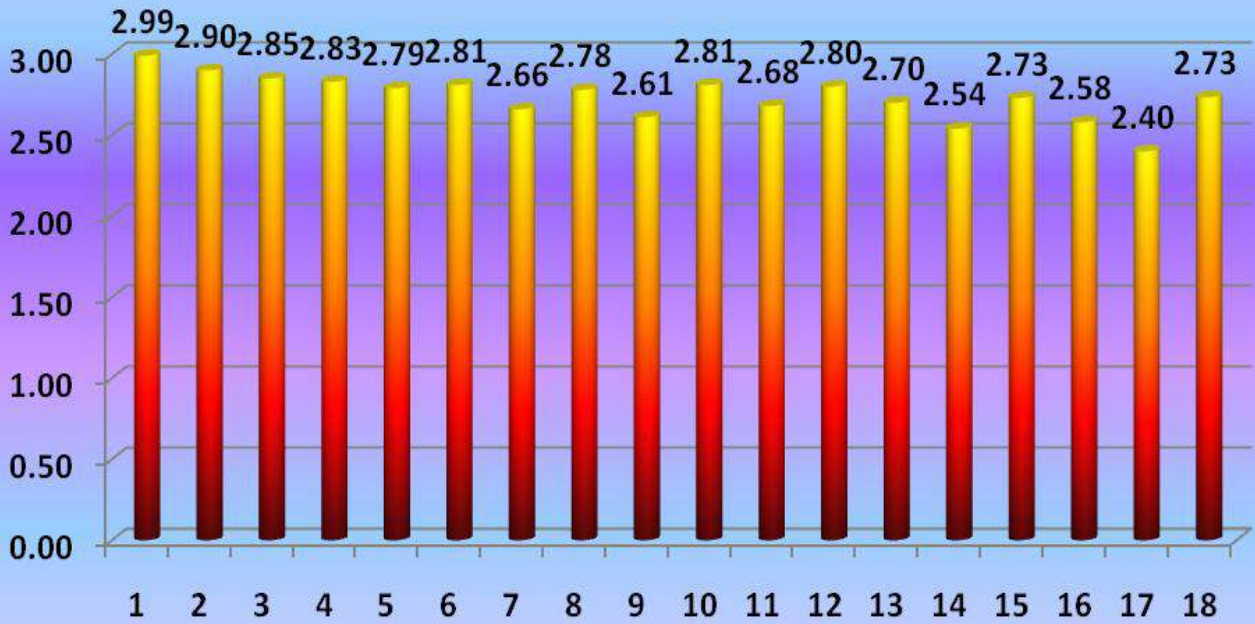
“Community Development Through Excellent Health care
Education, Service & Research Systems”





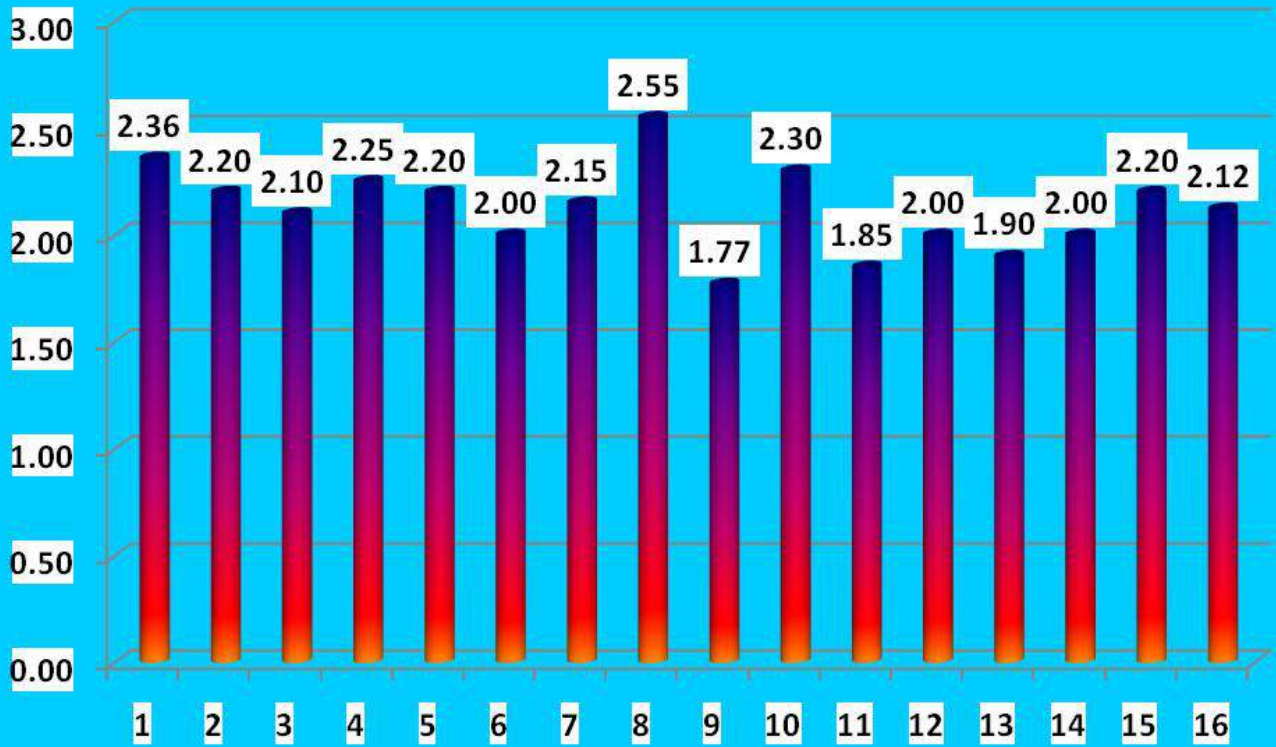


Evaluation Organisational Climate Feedback



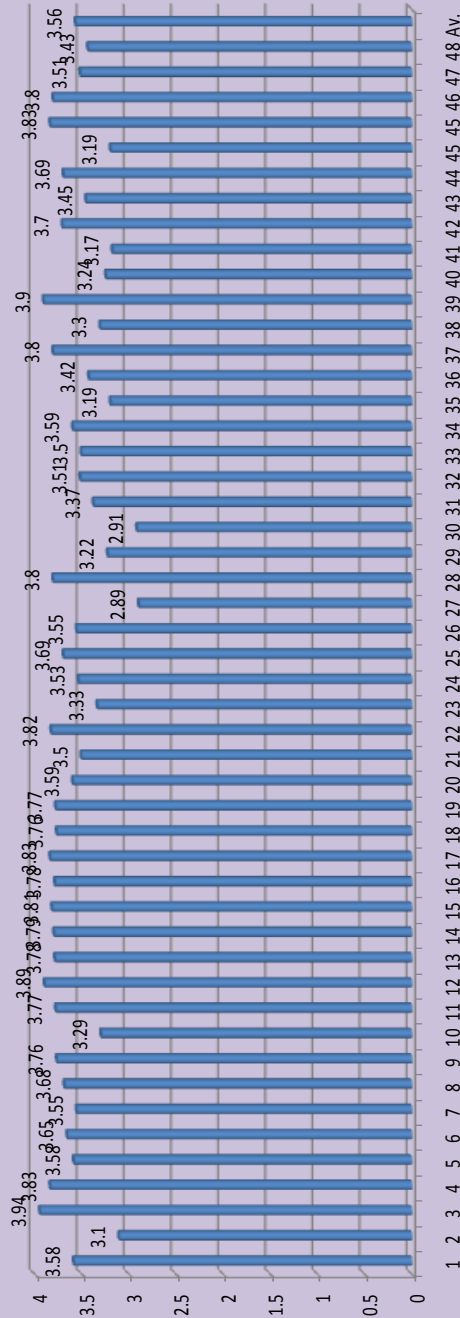


Overall Rating of Program by students



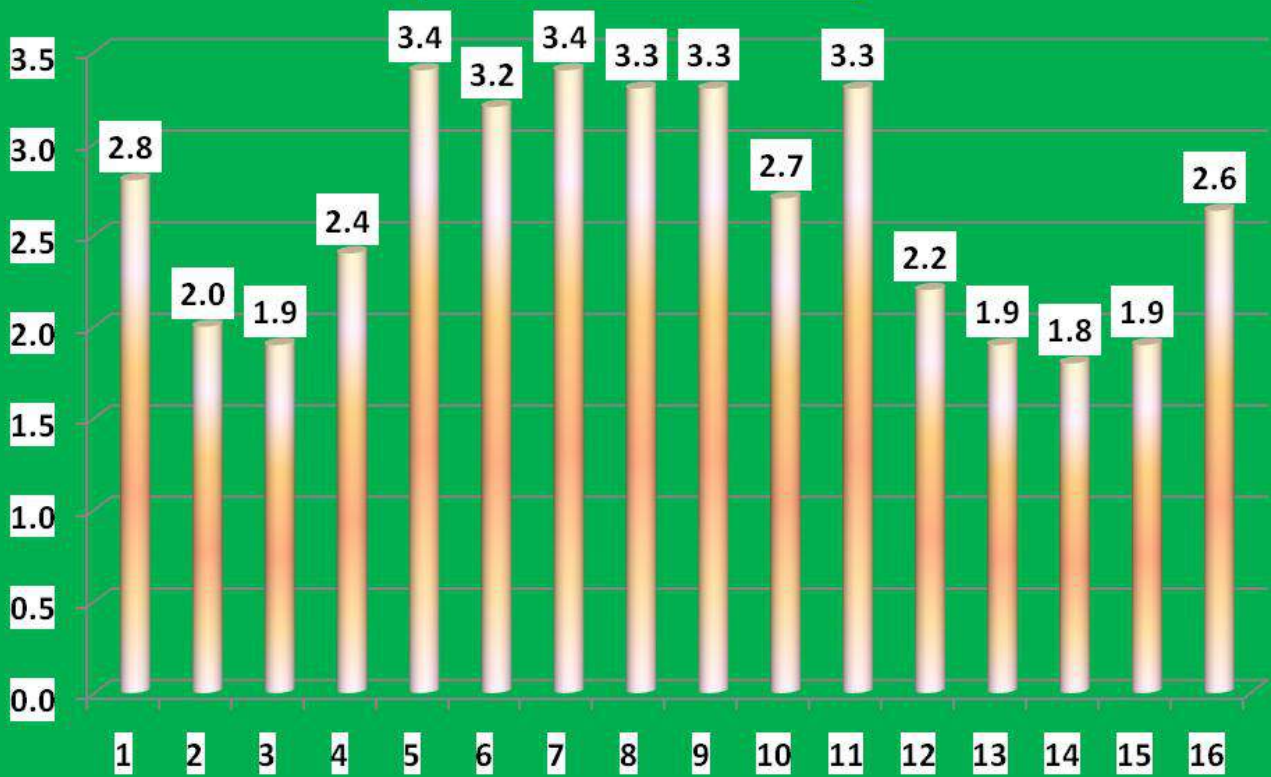


Infrastructure Feedback





ALUMNI FEEDBACK





Annexure - 3

Best Practice 1

Title of Practice: Student mentorship program.

Objective: the intention of this practice is to identify the strengths & the weakness of the students in terms of understanding of the subject & clinical skills.

The context: This program helps in providing proper attention in terms of student training by dedicated mentors who are given a select number of student to be monitored & trained. The mentors look into the problems faced by the students & give necessary corrections.

The Practice: in each term students are divided into groups of 8 to 10 students. Each group is assigned to the care of a mentor. The mentor interacts personally with the mentees on a individual bases to identify the strengths & weakness of the students. During the course of the term the mentor guides the mentees in a proper direction to improve the learning ability & proper learning of clinical skills . This practice provides proper overall development of the student training with individualized attention.

Evidence of success: the mentorship program has increased significantly the student performance in internal assessment & the university results.

Problems encountered: the main problems encountered are student punctuality in attending the classes & the availability of dedicated mentors.





Best Practice 2

Title of the Practice: HELINET facility in Library for advanced learning. Resources.

Objective: the purpose of this practice is to provide advanced information for teaching learning & research purpose.

The Context: The text book & print journals are not sufficient to obtain the latest developments taking place in medical practice across the world. HELINET (E-Journals) provides the latest information up to date before the arrival of the printed information.

The Practice: the college library has taken up the HELINET facility which provides access to various national & international learning resources. This facility is available round the clock & provides access to advanced learning resources & research material for utilization by students & faculty. This facility has boosted the research work. The central library of the institute has access to 675 E-Journals.

Evidence of success: the HELINET facility has significantly improved the student performance & the faculty development & training.

Problems encountered: the main problem encountered is proper internet access. The IT dept of the institute has taken proper measures to provide round the clock internet access.





Annexure – 4

Equipment List

Sl. No.	Department	Equipment	Cost
1	Surgery	Harmonic Scalpel & Enseal	13,71,500.00
2	OBG	Harmonic Scalpel & Enseal	13,71,500.00
3	Radiology	Heliophos D 600mA X-ray Generator	3,30,000.00
4	Surgery	Video Gastroscope & Video Colonoscope	11,341,40.00
5	TB & CD	DLCO PFT	11,42,598.50
6	Ortho	3 Chip Camera, Light Source & Monitor	12,35,920.00
7	Urology	Urodynamic System	12,42,000.00
8	Surgery	LED Double Dome Ceiling Mount OT Light	2,80,000.00
9	ENT	LED Double Dome Ceiling Mount OT Light	2,80,000.00
10	Ortho	OT Table	4,55,000.00
11	Major OT	Surgical Diathermy	4,30,000.00
12	OBG	Surgical Diathermy	4,30,000.00
13	OBG	Fetal Monitor	1,20,000.00
14	Anaesthesia	Neuro Muscular Junction (NMJ) Monitor	2,52,000.00
15	CRL	Microbalance	8,40,000.00
16	Blood Bank	Gel System	1,95,000.00
17	Radiology	Ultrasound Machine	75,50,000.00
18	MICU	Multipara Patient Monitor	2,78,000.00
19	MICU & SICU	Ventilator-2nos	18,00,000.00
20	Anesthesia	LED Double Dome Ceiling Mount OT Light	2,80,000.00
21	Surgery	Laposcopic Instruments	38,35,732.60
22	Ortho	C Arm	30,30,000.00
		Total	2,78,83,391.10



Annexure - 5

Extension Activities 2016-17

The Management and Staff of RRMCH has conducted Swatch Bharath Campaign was held during the year 2016-17.

In the year 2016-17 a survey of the campus including the canteen and its surroundings was undertaken and the workers of the canteen and the surrounding shopkeepers were educated regarding proper disposal of wet and dry waste and its importance in health and disease.

On the occasion of World AIDS Day every year rally is organized by the Dept of Community Medicine, Dept of Dermatology & Dept of OBG: Both UHTC & RHTC: 2016-17. Photography, Collage and short movie making Competitions were held during all the years.

.In the 2016-17 the senior teachers were facilitated. On the occasion of the Birth day of Dr. B C Roy a renowned cardiologist Dr. A S Chandrashekara Rao was facilitated.

A short skit was held in the year 2015-16 to celebrate World TB Day by the students of RRMCH. In the year 2016-17, a short movie was produced and directed by the students to address the issue of stigma and discrimination against TB patients was played.

On the occasion of International Women's Day every year, the women employees of Administrative dept of RRMCH organize skits and talks on women's empowerment with special focus on women's rights at workplace including maternity leave and provision of Crèche.

World Anti-Tobacco Day is commemorated annually by organizing rallies in the field practice areas and organizing health education events at various factories and educational institutions.

In the year 2017 TB – ACF activity was conducted by the Dept of TB and Chest Diseases in association with Dept of Community Medicine at the construction workers colony behind RRMCH. A Sensitization programme on TOG guidelines in RNTCP was conducted for staff of RRMCH in Jan, 2018.

Observation of World Mental Health Day by the Dept of Psychiatry on the 10th of October every year.



Dept. of Dermatology conducts awareness programmes on Leprosy Day, Vitiligo Day and Psoriasis Day and also organizes weekly camps.

Dept of Community Medicine observes World Health Day on 7th April every year by conducting poster, collage, quiz, short movie competitions with special focus on the World Health Day theme of that particular year.

Dept of Community Medicine observes World Environment Day on June 5th every year by planting saplings in the RRMCH campus and in the Urban and Rural Health Centre areas.

Free Health Camp was conducted by the dept of Community Medicine at an old age home near the Urban Health Centre area and Sweets, fruits and Medicines were distributed to the elderly people.